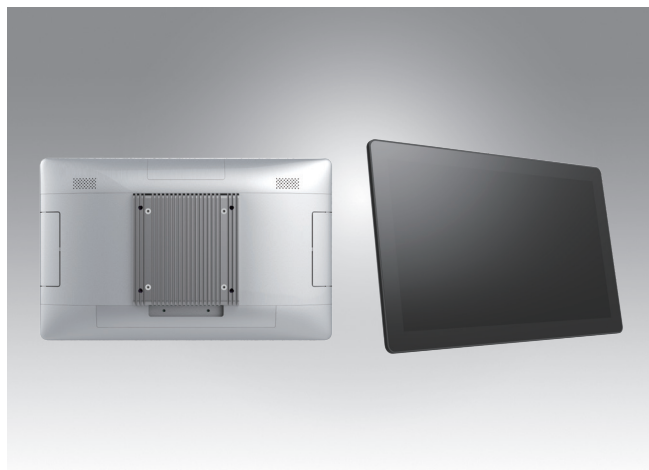


UTC-115

15.6" Ubiquitous Touch Computer UTC-115I with 11th Gen Intel® Core™ i5/i3 Processor



DeviceOn/iService

Features

- Slimmer and Lighter design
- Low power and fanless system design
- Built-in Intel® Core™ i5-1145G7E
- 15.6" monitor with 16:9 widescreen display
- IP65-rated front panel for water and dust resistance
- Clean back cover design with 3 Way IO cable routing
- Supports both landscape and portrait screen orientations
- VESA 100 mm standard mounting holes for varied mounting demands
- Support DeviceOn/iService software for remote device management



Introduction

UTC-115 features an all-in-one computing system which equipped with wide format, touch based LCD panel. It is easy to integrate key peripherals and display systems for diversified self-service and interactive signage deploy in different application areas.

Thanks for the slim and light looking with 3 way cable routing design, makes UTC-115 good fit to diverse scenarios and areas.

The systems deliver updated information with well-designed interactive interfaces, with fully ensure relevant content and targeted promotions are delivered. UTC series touch panel computers are the best investments to enhance user satisfaction, further brand equity, and maximize business profits.

Moreover, Advantech DeviceOn/iService Software is a next-generation unified device management unified device management solution based on the WISE-DeviceOn platform. With support for batch operations and multi-device control, DeviceOn/iService enables easy device configuration and deployment for convenient remote device management.

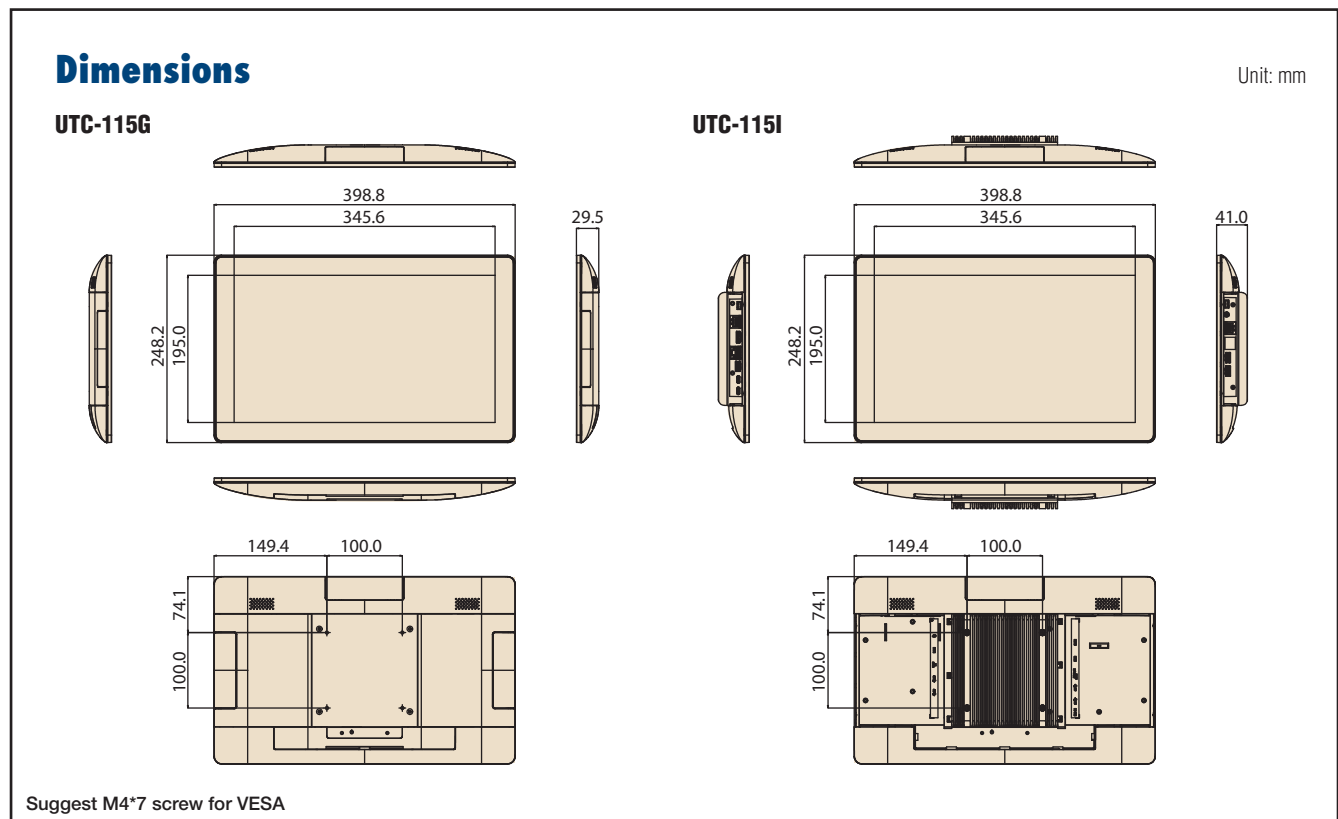
Specifications

| | | |
|---------------------------|---|--|
| Process system | CPU | Intel Core i5-1145G7E (Default) Intel Core i3-1115G4E |
| | Base Frequency | i5: 1.50 GHz (Quad-Cores) i3: 2.20 GHz (Dual-Cores) |
| | Memory | 1 x 260pin SO-DIMM DDR4 3200 MHZ up to 32GB |
| | Storage | 1 x 2.5 internal SATA storage*, M.2 2242/2280 SSD |
| | Network | 2 x Gigabit Ethernet ports (Supports Wake on LAN) |
| | I/O Ports | 2 x RS-232 COM (COM2 RS-232/422/485) |
| | | 3 x USB 3.2 Gen1 Type-A |
| | | 1 x USB 3.2 Gen 1 Type-C |
| | | 1 x DC-in USB Type-C |
| | | 2 x Gigabit Ethernet ports |
| | Stereo Speaker | 1 x HDMI 1.4 |
| | | 1 x Audio Phone Jack |
| | | 2 x 2W |
| 2 x 2W | | |
| Bus expansion | 1 x M.2 key2230, 1 x M.2 key2280 | |
| Mounting | VESA 100 x 100 mm (Screw Size, M4, 6mm) | |
| Dimension (WxHxD) | 398.8 x 248.2 x 29.5 | |
| Weight | 2.4kg | |
| OS Support | Win 10 IoT Enterprise 64bit Linux | |
| Environment Specification | Operating temperature | 0 ~ 40 °C (32 ~ 104 °F) |
| | Relative Humidity | 10 ~ 95% @ 40 °C non-condensing |
| | Vibration | 0.5G |
| | Shock | Shock 10G peak acceleration(11 msec. duration) |
| | Certification | CE, FCC, CB, UL, CCC, BSMI |
| | Front Panel Protection | IP 65 Compliant |
| Power Supply | DC Input Rating | 20V/4.5A (90W) |
| | PoE | n/a |
| | Power consumption | 35W |
| LCD Display | Size/Type | 15.6" FHD |
| | Max.Resolution | 1920 x 1080 |
| | Max. Color | 262K |
| | Pixel Pitch (um) | 179(H) x 179(V) |
| | Brightness (cd/m²) | 300 |
| | View Angle | 170°/170° |
| Touch Screen Option | Type | Projected Capacitive. |
| | Light Transmission | > 85% |
| | Controller | USB Interface |
| TPM | | TPM 2.0 |

Specifications (Cont.)

| | | |
|---|------------------------------------|------------|
| DeviceOn/iService Remote Device Management | Operating System | Windows 10 |
| | Common Controls (Reboot, Shutdown) | ✓ |
| | Remote desktop | ✓(VNC) |
| | Device-Specific Controls (Audio) | ✓* |
| | Connection Status | ✓ |
| | Hardware Status | ✓* |
| | Hard Disk Status | ✓* |
| | Batch Operation Support | ✓ |
| | OTA Storage Management | FTP |
| | OTA Software Updates | ✓ |
| | Software Watchlist | ✓ |
| | Software Start/Stop | ✓* |
| | Kiosk Mode | |
| *Dependent on device model | Peripherals Watchlist | ✓* |

Note: DeviceOn/iService software must be downloaded from the Advantech website at <https://www.advantech.com/search/?q=DeviceOn%2FiService&st=support&sst=Utility>
 Note: It will block some IO ports on the same side.



Fully- Integrated I/O



Ordering Information

For Worldwide Model

| Part No. | Descriptions |
|-----------------|--|
| UTC-115IP-WWW1F | 15.6" Pcap, FHD 1920x1080, I5-1145G7E CPU, 8G RAM, 128G SSD, Win 10 IOT, Wifi/BT, Silver Color |

Extra ordering information

| Part No. | Descriptions |
|--------------------------|--|
| 170203183C/170203183C-01 | Power Cord UL 3P 10A 125V 183cm (EU) |
| 1700001524 | Power Cord EU 3P 2.5A 250V 183cm (US) |
| 1700019146 | Power Cord CCC 3P 2.5A 250V 183cm (China) |
| 170203180A | Power Cord BSI 3P 2.5A 250V 183cm (UK) |
| 1700025928-02 | COM Port Converter cable RJ48-10P10C to D-SUB 9P 35cm |
| UTC-T01-STANDE | Tri Shape Floor Stand 120cm |
| UTC-100P-STAND0E | L Stand for UTC-115 |
| UTC-300P-D20E | Desk Stand, Silver, for UTC-115/120 |
| UTC-UPOS-STAND0E | Double Hinge Stand |
| UTC-AVALO-STAND0E | Avalo Stand |
| ARES-2423X-S151001 | Table Stand for UTC-115 (Black) |
| ARES-2425X-S271001 | Tilt Table Stand for UTC-100 Series (Black) (Support Portrait & Landscape) |
| ARES-12250-L101000 | Vesa Wall-mount for UTC-100 Series (Black) |

Peripheral Mountable on All 4 Sides



Peripherals for UTC-100(AIO system) series

| Part No. | Description |
|---------------|-------------------------------------|
| UTC-100P-B11E | 2D Barcode Scanner for UTC-115/120 |
| UTC-100P-C10E | 5M Camera for UTC-115/120 |
| UTC-100P-R10E | RFID Scanner for UTC-115/120 |
| UTC-100P-M10E | MSR Reader for UTC-115/120 |
| UTC-100P-S10E | Smart Card Reader for UTC-115/120 |
| UTC-100P-L10E | LED Light Bar for UTC-115/120 |
| UTC-100P-F10E | Finger Print Reader for UTC-115/120 |
| UTC-100P-T10E | Thermal Camera for UTC-115/120 |

DeviceOn/iService

Unified Remote Device Management Software



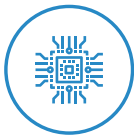
Features

- Supports Advantech devices equipped with Windows, Android, and Linux OS
- Flexible device, location, user, and permissions management
- Enables remote monitoring and control of hardware, software, and peripherals
- Supports over-the-air (OTA) firmware and software updates
- Ensures quick, easy, and secure device onboarding
- RESTful APIs for third-party system integration

Introduction

Advantech's DeviceOn/iService is a next-generation unified device management solution based on the WISE-DeviceOn platform. Designed to enable centralized monitoring and remote management, DeviceOn/iService supports Advantech devices equipped with Windows, Linux, or Android operating systems. The software also supports the management of applications and integrated peripherals, such as a barcode scanner, card reader, camera, and printer. Users can remotely access and control connected devices, take screenshots, rollout OTA upgrades, and use remote desktop capabilities for troubleshooting from any location at any time. Moreover, DeviceOn/iService supports batch operations to facilitate the management of multiple devices simultaneously for easy and convenient device configuration and deployment.

Total Management



Devices & Hardware

- Windows, Linux, Android
- Hardware, storage, battery



Software & Peripherals

- Software monitoring & access
- Screens, USB devices, printers



Open for Expansion

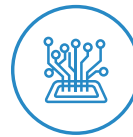
- Peripheral integration
- Open APIs for integration

Remote Access



Real-Time Monitoring

- Connection/hardware status
- Software/peripheral status
- Failure notifications



Remote Controls

- Power controls
- Audio, backlight controls
- Software controls



Troubleshooting

- Screenshots
- Remote desktop support

Operational Efficiency



OTA updates

- System/software updates
- File repository management
- App store



Batch Controls

- 1-to-many batch reboot, etc.
- Time-saving tasks

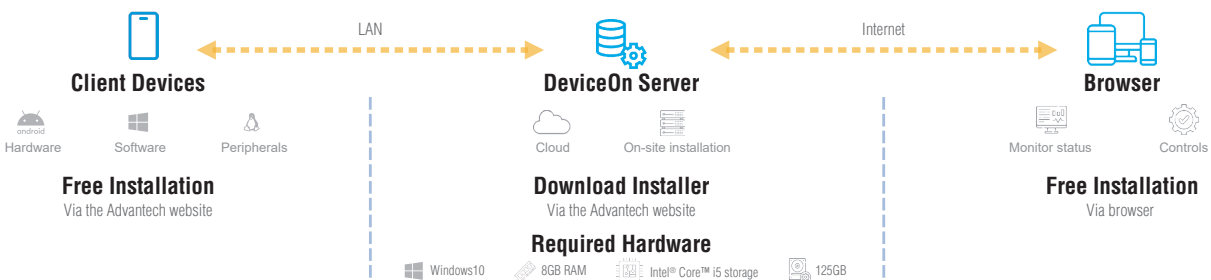


Setup Booster

- Software/peripheral watchlist
- Roles, rule templates

Note: Some functions may vary according to the product

System Architecture



Tento produkt můžete zakoupit u společnosti AutoCont IPC a.s.



AutoCont IPC a.s.

Váš dodavatel průmyslových počítačů, komponent a speciálních průmyslových IT systémů.

 Uhlířská 1064/3, 710 00 Ostrava, Česká republika

 obchod@autocont-ipc.cz

 +420 552 301 002

 www.autocont-ipc.cz



PRŮMYSLOVÉ POČÍTAČE

fanless embedded PC, do racku, ...



POČÍTAČE S DISPLEJEM

panelové PC, terminály, do vozidel, ...



AUTOMATIZACE A SBĚR DAT

převodníky, karty, moduly, switche, ...



PERIFERIE A KOMPONENTY

monitory, klávesnice, desky, skříně, ...



NOTEBOOKY A TABLETY

odolné, windows, android, IP65, ...



INFORMAČNÍ KIOSKY

interiérové, venkovní, ...



MEDICÍNSKÁ TECHNIKA

počítače, tablety, LCD, klávesnice, ...



SOFTWAREVÁ ŘEŠENÍ

pro výrobu, zaměstnance, kiosky, ...



PŘEJÍT DO E-SHOPU

eshop.autocont-ipc.cz



DOPRAVA ZDARMA

Doprava zdarma v ČR a SR při objednávce nad 10 000 Kč bez DPH nebo nad 400 EUR.



PRODLOUŽENÁ ZÁRUKA

Záruka 2 roky na vyráběné počítače s možností jejího prodloužení až na 5 let.



ODMĚNA ZA VĚRNOST

Pravidelní zákazníci u nás nakupují za nižší ceny. Výše slevy se odvíjí od realizovaného obrátu.



SERVIS ON-SITE A IN-TIME

K projektovým dodávkám nabízíme rozšířenou podporu a servis s garancí výměny zařízení do 48 hodin.