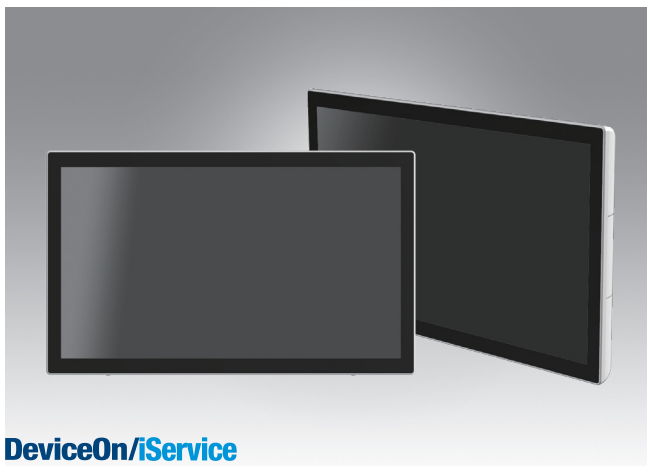


UTC-320

21.5" Ubiquitous Touch Computer
UTC-320D with Intel® Celeron® J1900
UTC-320F with Intel® Core™ i5-6300U
UTC-320G with Intel® Pentium® N4200E
UTC-320H with Intel® Core™ i5-8365UE



DeviceOn/iService

Features

- Low power and fanless system design
- Built in Intel Celeron® J1900 (UTC-320D), Core™ i5-6300U (UTC-320F) and, Pentium® N4200E (UTC-320G) and Intel® Core™ i5-8365UE (UTC-320H)
- 21.5" monitor with 16:9 widescreen display
- IP65-rated front panel for water and dust resistance
- Supports both landscape and portrait screen orientations
- VESA 100 mm standard mounting holes for varied mounting demands
- Detachable frame design for panel mount applications
- Support DeviceOn/iService software for remote device management (UTC-320D/F only)



Introduction

UTC-320 is the multi-purpose all-in-one computing system which equipped with wide format, touch based LCD panel. It is easy to integrate key peripherals and display systems for diversified self-service and interactive signage deploy in different application areas. With the removable frame, the system also could fulfill industries or control system applications with panel mounting design. UTC series touch panel computers are the best investments to enhance user satisfaction, further brand equity, and maximize business profits.

Moreover, UTC-320 is equipped with Advantech's DeviceOn/iService software, which is a next-generation unified device management solution based on the WISE-DeviceOn platform. With support for batch operations and multi-device control, DeviceOn/iService enables easy device configuration and deployment for convenient remote device management.

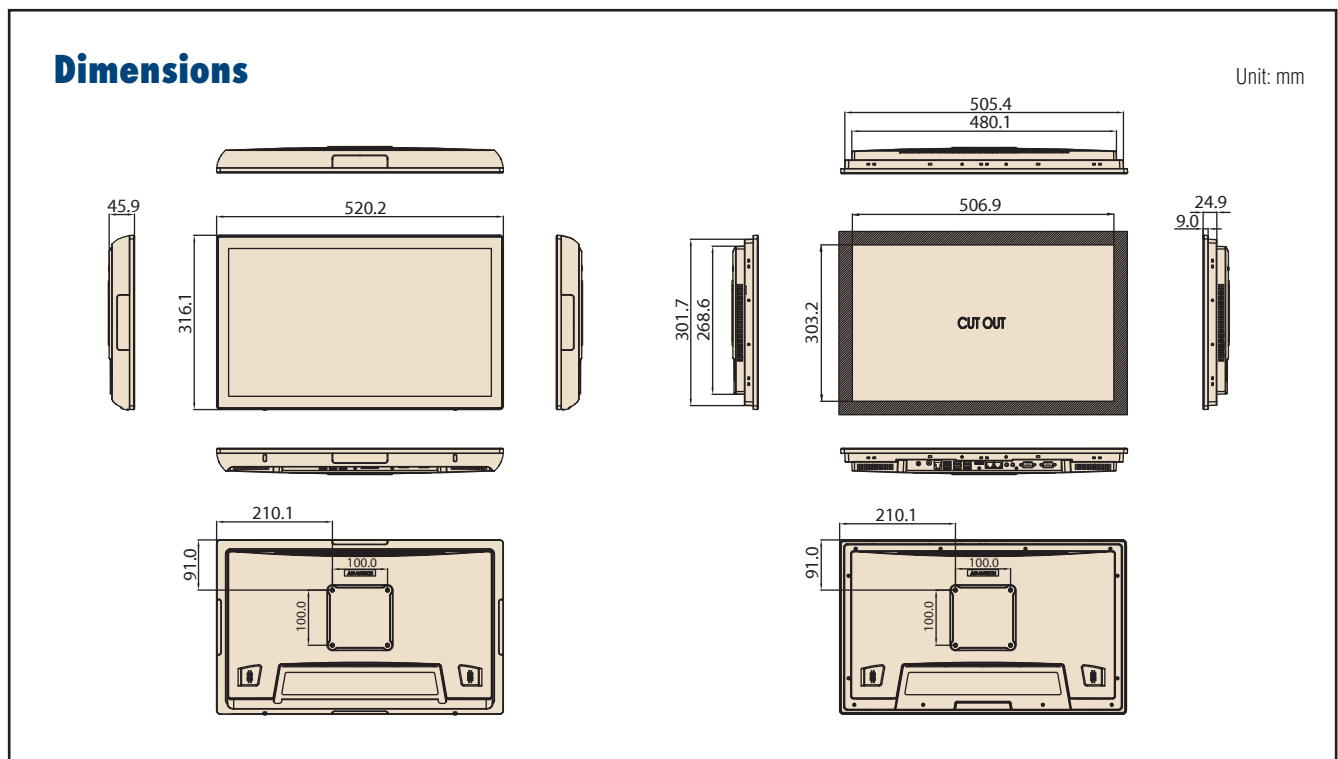
Specifications

| Model | UTC-320D | UTC-320F | UTC-320G | UTC-320H | |
|------------------------------|---|---|--|---|---|
| Processor System | CPU | Intel® Celeron® J1900 | Intel® Core™ i5-6300U (Default) Intel® Core™ i3-6100U (Available) | Intel® Pentium® N4200E (Default) Intel® Celeron® N3350 (Available) | Intel® Core™ i5-8365UE (Default) Intel® Core™ i3-8145UE (Available) |
| | Basic Frequency | 2.0 GHz (Quad-Core) | 2.4GHz (Duo Core) | 1.10 GHz (Quad-Core) | 1.6GHz(Quad-Core) |
| | Cache | L2 Cache MB | | L2 Cache 2MB | L3 Cache 3MB |
| | Memory | 1 x 204pin SO-DIMM DDR3L 1333 MHz up to 8 GB | 1 x 260pin SO-DIMM DDR4 2133 MHz up to 16 GB | 1 x 204pin SO-DIMM DDR3L 1866 MHz up to 8GB | 1X 260pin SO-DIMM DDR4 2400 MHz up to 32GB |
| | HDD | 1 x 2.5 internal SATA HDD bay | | | |
| | Network | 2 x Gigabit Ethernet ports (RJ-45) | | | |
| | I/O ports | 1 x RS-232 1 x RS-232 / 422 / 485 5 x USB 2.0 / 1 x USB 3.0 2 x Gigabit Ethernet (RJ-45) 1 x HDMI Audio Line-out x 1, Mic-in x 1 | 1 x RS-232 1 x RS-232/422/485 2 x USB 2.0 / 4 x USB 3.0 2 x Gigabit Ethernet (RJ-45) 1 x HDMI 1 x RJ-11 Audio Line-out x 1, Mic-in x 1 | 1 x RS-232 1 x RS232 / 422 /485 2 x USB 2.0 / 4 x USB 3.0 2 x Gigabit Ethernet (RJ-45) 1 x HDMI 1 x RJ11 Audio Line-out x 1, Mic-in x 1 | 1 x RS-232 1 x RS-232/485 6 x USB 3.1 2 x Gigabit Ethernet (RJ-45) 1 x HDMI 1 x DP Audio Line-out x 1, Mic-in x 1 |
| | Stereo Speaker | 2Wx2 | | | |
| | BUS expansion | Full-size MiniPCIe/mSATA | | M.2 2230/mSATA | |
| | Mounting | VESA 100 x 100; Screw Size: M4, 10mm | | | |
| Dimension (W x H x D) | 520.2 x 316.1 x 45.9 mm | | | | |
| Weight | 6.5 Kg | | | | |
| OS support | WES 7P 32bit WES 7E 32bit Windows Pro Embedded 7 SP1 64bit WES8 64bit Windows Embedded 8.1 Industry Pro 64bit Win 10 IoT Enterprise 64bit Linux Android 6.0 | | WES 7P 32bit WES 7E 32bit Windows Pro Embedded 7 SP1 64bit WES8 64bit Windows Embedded 8.1 Industry Pro 64bit Win 10 IoT Enterprise 64bit Linux | | |
| | | | Win 10 IoT Enterprise 64bit Android 10.0 Linux | | |
| Environmental Specifications | Operating Temperature | 0 ~ 40° C (32 ~ 104° F) | | | |
| | Relative Humidity | 10 ~ 95% @ 40° C non-condensing | | | |
| | Vibration | 0.5G | | | |
| | Shock | 10 G peak acceleration (11 msec. duration) | | | |
| | EMC/ Safety | CE, FCC, UL, CCC CB,BSMI | | | |
| Front Panel Protection | IP65/ NEMA4 Compliant | | | | |
| Power Supply | Input Voltage | 12Vdc *12-30Vdc Optional | 12-30Vdc | 12Vdc *12-30Vdc Optional | |
| | Power Consumption | Typical 45W, Max. 80W | | | |
| | Adapter | 12V == 7A, 84W or 12V == 8A, 96W ITE adapter (dependent on stock) | | | |
| LCD Display | Size | 21.5" TFT LCD | | | |
| | Max Resolution | 1920 x 1080 | | | |
| | Max Color | 16.7M | | | |
| | Pixel Pitch (um) | 248.25 (H) x 248.25 (V) | | | |
| | Brightness (cd/m²) | 250 (Typical) | | | |
| View Angle | 178°/178° | | | | |
| Touch Screen | Type | Analog Resistive 5-wires (Res. Flat Glass) / Projected Capacitive Touch Panel (Pcap. Flat Glass) / Glass Panel | | | |
| | Light Transmission | 90% ± 2% / 80% ± 5% / 90% | | | |
| | Controller | COM interface / USB interface | | | |

Specifications (Cont.)

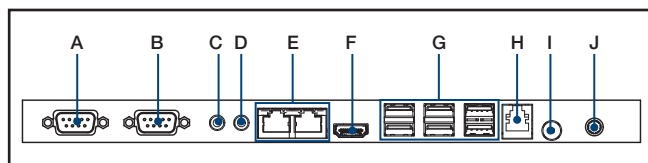
| | | |
|---|------------------------------------|------------|
| DeviceOn/iService Remote Device Management | Operating System | Windows 10 |
| | Common Controls (Reboot, Shutdown) | ✓ |
| | Remote desktop | ✓ (VNC) |
| | Audio Controls | ✓* |
| | Connection Status | ✓ |
| | Hardware Status | ✓* |
| | Hard Disk Status | ✓* |
| | Batch Operation Support | ✓ |
| | OTA Storage Management | FTP |
| | OTA Software Updates | ✓ |
| | Software Watchlist | ✓ |
| | Software Start/Stop | ✓* |
| *Dependant on device model | Peripherals Watchlist | ✓* |

Note: DeviceOn/iService software must be downloaded from the Advantech website at <https://www.advantech.com/search/?q=DeviceOn%2FiService&st=support&sst=Utility>



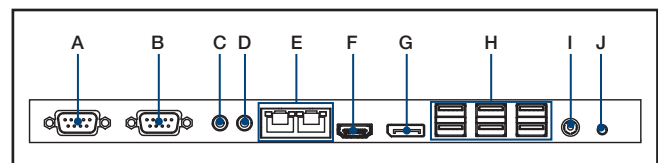
Fully- Integrated I/O

UTC-320D/F/G



- A. COM1
- B. COM2
- C. Line-out (UTC-320D)
- D. Mic-in (UTC-320F/UTC-320G)
- E. Line-Out (UTC-320F/UTC-320G)
- F. LAN ports x 2
- G. USB 2.0 x 5 / USB 3.0 x 1 (UTC-320D)
USB 2.0 x 2 / USB 3.0 x 4 (UTC-320F/
UTC-320G)
- H. RJ-11 (UTC-320F/UTC-320G)
- I. Power button
- J. DC input 12V (UTC-320D/UTC-320G)
12-30V (UTC-320F)

UTC-320H



- A. COM1
- B. COM2
- C. Mic in
- D. Line-out
- E. LAN ports x 2
- F. HDMI
- G. DP
- H. USB 3.1 x 6
- I. DC input 12-30V
- J. Power button

Ordering Information

| Part No. | US only P/N | Description |
|-----------------|-----------------|--|
| UTC-320DR-ATW0E | UTC-320DR-USW0E | 21.5" White, Intel® Celeron® J1900, Res T/S, 4GB RAM, IT Adapter |
| UTC-320DR-ATB0E | UTC-320DR-USB0E | 21.5" Black, Intel® Celeron® J1900, Res T/S, 4GB RAM, IT Adapter |
| UTC-320DP-ATW0E | UTC-320DP-USW0E | 21.5" White, Intel® Celeron® J1900, PCap T/S, 4GB RAM, IT Adapter |
| UTC-320DP-ATB0E | UTC-320DP-USB0E | 21.5" Black, Intel® Celeron® J1900, PCap T/S, 4GB RAM, IT Adapter |
| UTC-320FR-ATW0E | UTC-320FR-USW0E | 21.5" White, Intel® Core™ i5-6300U, Res T/S 4GB RAM, IT Adapter |
| UTC-320FR-ATB0E | UTC-320FR-USB0E | 21.5" Black, Intel® Core™ i5-6300U, Res T/S 4GB RAM, IT Adapter |
| UTC-320FP-ATW0E | UTC-320FP-USW0E | 21.5" White, Intel® Core™ i5-6300U, PCap T/S 4GB RAM, IT Adapter |
| UTC-320FP-ATB0E | UTC-320FP-USB0E | 21.5" Black, Intel® Core™ i5-6300U, PCap T/S 4GB RAM, IT Adapter |
| UTC-320GR-ATW0E | UTC-320GR-USW0E | 21.5" White, Intel® Pentium® N4200E, Res T/S, 4GB RAM, IT Adapter |
| UTC-320GR-ATB0E | UTC-320GR-USB0E | 21.5" Black, Intel® Pentium® N4200E, Res T/S, 4GB RAM, IT Adapter |
| UTC-320GP-ATW0E | UTC-320GP-USW0E | 21.5" White, Intel® Pentium® N4200E, PCap T/S, 4GB RAM, IT Adapter |
| UTC-320GP-ATB0E | UTC-320GP-USB0E | 21.5" Black, Intel® Pentium® N4200E, PCap T/S, 4GB RAM, IT Adapter |
| UTC-320HR-ATW0E | UTC-320HR-USW0E | 21.5" White, Intel® Core™ i5-8365UE, Res T/S, 8GB RAM, IT Adapter |
| UTC-320HR-ATB0E | UTC-320HR-USB0E | 21.5" Black, Intel® Core™ i5-8365UE, Res T/S, 8GB RAM, IT Adapter |
| UTC-320HP-ATW0E | UTC-320HP-USW0E | 21.5" White, Intel® Core™ i5-8365UE, PCap T/S, 8GB RAM, IT Adapter |
| UTC-320HP-ATB0E | UTC-320HP-USB0E | 21.5" Black, Intel® Core™ i5-8365UE, PCap T/S, 8GB RAM, IT Adapter |

*White Touch Bezel could be customized by customer request with MOQ

UTC-320 WiFi Ordering Information

| Part No. | US only P/N | Description |
|---------------|---------------|--|
| UTC-300P-W10E | UTC-300P-W10U | WiFi Kit for UTC-320D/E/F (MiniPCle, WiFi only) |
| UTC-300P-W11E | UTC-300P-W11U | WiFi Kit for UTC-320D/E/F (MiniPCle, WiFi and Bluetooth) |
| UTC-300P-W12E | UTC-300P-W12U | WiFi Kit for UTC-320G/H (M.2 2230, WiFi and Bluetooth) |

Installation Accessory

| Part No. | US only P/N | Description |
|-------------------|-------------------|---|
| UTC-300P-D20E | UTC-300P-D20U | Desk Stand, Single Color-Silver (UTC-318/UTC-320 series) |
| UTC-T01-STANDE | Not applicable | Triangle shape floor stand (UTC-315/UTC-318/UTC-320 series) |
| UTC-H01-STANDE | Not applicable | H-shaped floor stand (UTC-315/UTC-318/UTC-320 series) |
| UTC-PANEL-MOUNT4E | UTC-PANEL-MOUNT4U | Panel mount Kit(UTC-320Series) |
| UTC-WALL-MOUNT1E | Not Applicable | Wall Mount Kit for UTC-315/318/320 (Swivel) |
| UTC-WALL-MOUNT3E | Not applicable | Wall Mount Kit for UTC-315/318/320 (Fixed) |

Peripherals for UTC-300 series

| Part No. | US only P/N | Description |
|----------------|----------------|--|
| UTC-300P-C20E | UTC-300P-C20U | 5M Camera Module, White, for UTC-300 series |
| UTC-300P-C21E | UTC-300P-C21U | 5M Camera Module, Black, for UTC-300 series |
| UTC-300P-M20E | UTC-300P-M20U | Magnet Strip Reader, White, for UTC-300 series |
| UTC-300P-M21E | UTC-300P-M21U | Magnet Strip Reader, Black, for UTC-300 series |
| UTC-300P-R20E | UTC-300P-R20U | RFID Reader, White, for UTC-300 series |
| UTC-300P-R21E | UTC-300P-R21U | RFID Reader, Black, for UTC-300 series |
| UTC-300P-S20E | UTC-300P-S20U | Smart Card Reader, White, for UTC-300 series |
| UTC-300P-S21E | UTC-300P-S21U | Smart Card Reader, Black, for UTC-300 series |
| UTC-300P-B60E | UTC-300P-B60U | 2D Barcode Reader, White for UTC-300 series |
| UTC-300P-B61E | UTC-300P-B61U | 2D Barcode Reader, Black for UTC-300 series |
| UTC-300P-FP11E | UTC-300P-FP11U | Fingerprint Reader (black) for UTC-300 series |

Power Cord Ordering Information

| Part NO. | Description |
|--------------|---|
| 1702002605 | Power cord 2P FRANCE 10A/16A 220V 1.83M 90D |
| 1702002600 | Power Cord 3P UL/CSA(USA) 125V 10A 1.83M 180D |
| 170000596-11 | Power Cord (China) CCC, 10A 250V, 3P 1830mm |
| 1700018704 | Power Cord UK BSI 2P 10A 250V 180cm 18AWG |
| 1700000237 | Power Cord PSE 3P 12A 125V 183cm |
| 1700001714 | Power Cord BSMI 3P 7A 125V 183cm |

DeviceOn/iService

Unified Remote Device Management Software



Features

- Supports Advantech devices equipped with Windows, Android, and Linux OS
- Flexible device, location, user, and permissions management
- Enables remote monitoring and control of hardware, software, and peripherals
- Supports over-the-air (OTA) firmware and software updates
- Ensures quick, easy, and secure device onboarding
- RESTful APIs for third-party system integration

Introduction

Advantech's DeviceOn/iService is a next-generation unified device management solution based on the WISE-DeviceOn platform. Designed to enable centralized monitoring and remote management, DeviceOn/iService supports Advantech devices equipped with Windows, Linux, or Android operating systems. The software also supports the management of applications and integrated peripherals, such as a barcode scanner, card reader, camera, and printer. Users can remotely access and control connected devices, take screenshots, rollout OTA upgrades, and use remote desktop capabilities for troubleshooting from any location at any time. Moreover, DeviceOn/iService supports batch operations to facilitate the management of multiple devices simultaneously for easy and convenient device configuration and deployment.

Total Management



Devices & Hardware

- Windows, Linux, Android
- Hardware, storage, battery



Software & Peripherals

- Software monitoring & access
- Screens, USB devices, printers



Open for Expansion

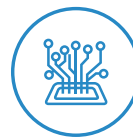
- Peripheral integration
- Open APIs for integration

Remote Access



Real-Time Monitoring

- Connection/hardware status
- Software/peripheral status
- Failure notifications



Remote Controls

- Power controls
- Audio, backlight controls
- Software controls



Troubleshooting

- Screenshots
- Remote desktop support

Operational Efficiency



OTA updates

- System/software updates
- File repository management
- App store



Batch Controls

- 1-to-many batch reboot, etc.
- Time-saving tasks

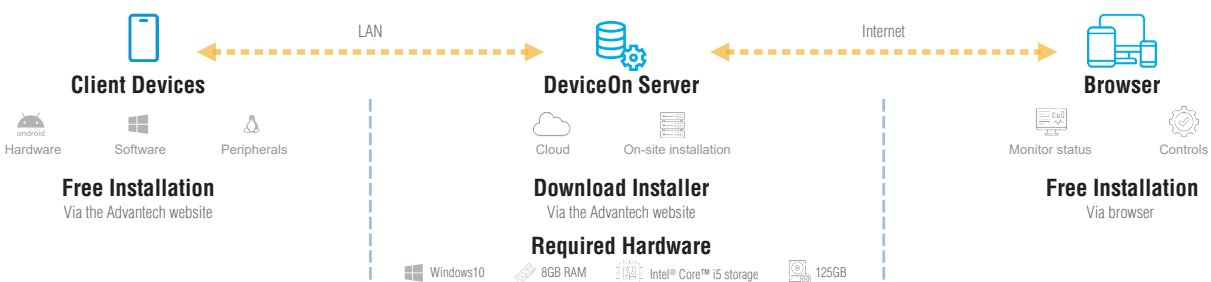


Setup Booster

- Software/peripheral watchlist
- Roles, rule templates

Note: Some functions may vary according to the product

System Architecture



Tento produkt můžete zakoupit u společnosti AutoCont IPC a.s.



AutoCont IPC a.s.

Váš dodavatel průmyslových počítačů, komponent a speciálních průmyslových IT systémů.

 Uhlířská 1064/3, 710 00 Ostrava, Česká republika

 obchod@autocont-ipc.cz

 +420 552 301 002

 www.autocont-ipc.cz



PRŮMYSLOVÉ POČÍTAČE

fanless embedded PC, do racku, ...



POČÍTAČE S DISPLEJEM

panelové PC, terminály, do vozidel, ...



AUTOMATIZACE A SBĚR DAT

převodníky, karty, moduly, switche, ...



PERIFERIE A KOMPONENTY

monitory, klávesnice, desky, skříně, ...



NOTEBOOKY A TABLETY

odolné, windows, android, IP65, ...



INFORMAČNÍ KIOSKY

interiérové, venkovní, ...



MEDICÍNSKÁ TECHNIKA

počítače, tablety, LCD, klávesnice, ...



SOFTWAREVÁ ŘEŠENÍ

pro výrobu, zaměstnance, kiosky, ...



PŘEJÍT DO E-SHOPU

eshop.autocont-ipc.cz



DOPRAVA ZDARMA

Doprava zdarma v ČR a SR při objednávce nad 10 000 Kč bez DPH nebo nad 400 EUR.



PRODLOUŽENÁ ZÁRUKA

Záruka 2 roky na vyráběné počítače s možností jejího prodloužení až na 5 let.



ODMĚNA ZA VĚRNOST

Pravidelní zákazníci u nás nakupují za nižší ceny. Výše slevy se odvíjí od realizovaného obrátu.



SERVIS ON-SITE A IN-TIME

K projektovým dodávkám nabízíme rozšířenou podporu a servis s garancí výměny zařízení do 48 hodin.