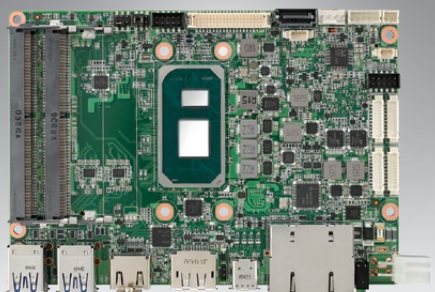


MIO-5375

11th Gen. Intel® Core™ i7/i5/i3/Celeron U-Series 3.5" SBC w/ MIOe

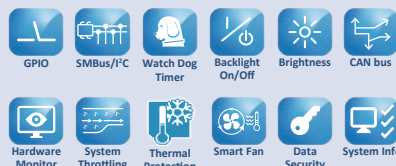
Preliminary



Features

- 11th Gen. Intel® Core™ Processor with Quad/Dual Cores, TDP 15W/ 28W
- Dual Channel DDR4-3200 up to 64GB
- 4 simultaneous displays: LVDS/HDMI/DP/USB Type-C, eDP (optional)
- 2 GbE, 4 USB3.2, CAN Bus, DC-in 12-24V
- Expansion: M.2 E-Key/B-Key/M-Key (supports NVMe), MIOe
- Supports iManager, WISE-PaaS/RMM, SW API, and Edge AI Suite

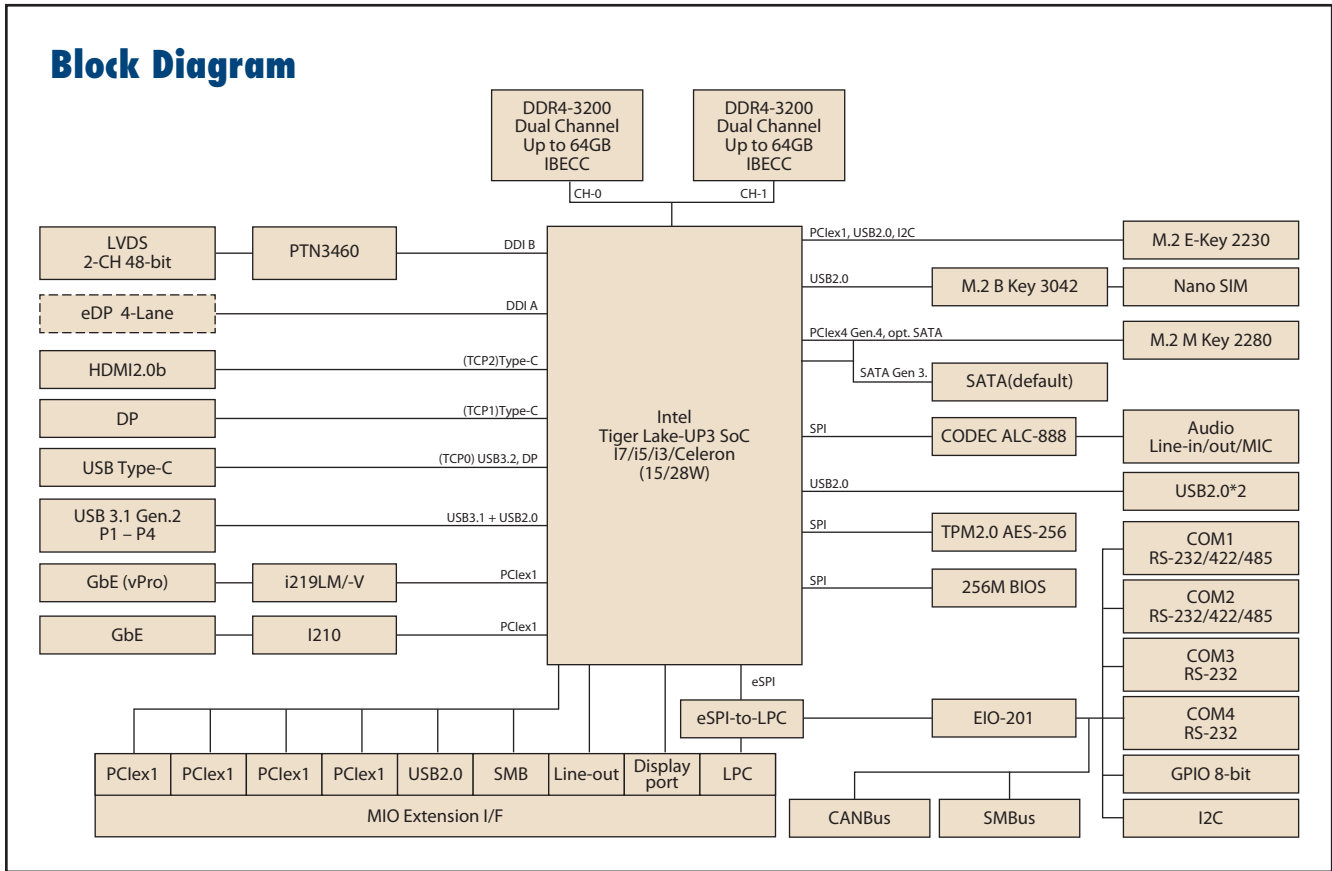
Software APIs:



Specifications

	Processor	i7-1185G7E	i7-1185GRE	i5-1145G7E	i3-1115G4E
Platform	Max. Frequency	4.40 GHz	4.40 GHz	4.10 GHz	3.90 GHz
	Base Frequency	1.80/ 2.8 GHz	1.80/ 2.8 GHz	1.50/ 2.6 GHz	2.20/ 3.0 GHz
	Core/Tread	4/8	4/8	4/8	2/4
	LLC	12MB	12MB	8MB	6MB
	CPU cTDP-down/ Up/ Nominal	12W/ 15W/ 28W	12W/ 15W/ 28W	12W/ 15W/ 28W	12W/ 15W/ 28W
	Chipset	Intel® 300 Series Chipset (SoC Integrated)			
	BIOS	AMI EFI 256Mbit			
Memory	Technology	DDR4-3200			
	Max. Capacity	Up to 64GB			
	Channel/Socket	Dual Channels / 2 Sockets			
Graphics	ECC Support	No	Yes	No	No
	Controller	Intel® Iris® Xe graphics, up to 96 graphics execution units (EU)			
Display I/F	Max. Frequency	3200MT/s		3200MT/s	3200MT/s
	LCD	1 x LVDS; Dual Channel 18/24-bit, up to 1920 x 1200 Optional eDP1.4 HBR3, up to 4096x2304x36bpp@60Hz or 5120x3200x24bpp@24Hz			
	HDMI/DP	1 x HDMI 2.0b, up to 4Kx2Kx24bpp@60Hz 1 x DP1.4a, up to 4096x2304x36bpp@60Hz or 5120x3200x24bpp@60Hz			
	Multiple Display	4 simultaneous displays with each display interface combinations			
External I/O	Ethernet	2 x GbE, LAN1: Intel i219LM, LAN2: Intel i210AT/IT (for industrial grade)			
	HDMI/DP	1/1			
	USB Type-C	1 x USB3.2 Gen. 2x2 20Gbps, support DP1.4a via Alt. Mode			
	USB3.2	4 x USB3.2 Gen. 2x1 10Gbps			
	LED	Power status, SATA R/W			
	Power DC-Jack	Optional			
	SATA	1 x SATA GenIII 6.0 Gbps			
Internal I/O	USB2.0	2			
	Serial Bus	I2C, SMBus			
	COM Port	2 x RS-232/422/485, 2 x RS-232 (4-wire)			
	GPIO	8-bit general purpose input output I/O			
	Audio	Realtek ALC888, Line-in/Line-out/MIC			
	Inverter	12V/5V/3.3V selectable			
	LPC/SPI Bus	LPC			
	CAN Bus	1 x CANBus 2.0			
	Fan	4-wire smart fan			
	Front Panel Control	Power-on, Reset, Buzzer, SATA LED, CaseOpen			
	Board Feature	Watchdog Timer	65536 level, 0-65535 sec		
TPM		TPM2.0, Infineon SLB9670			
iManager 3.0		SW API for Hardware Monitor, Smart Fan Control, Brightness Control, I2C, GPIO, WDT			
Expansion	M.2 E-Key	1 x E-Key 2230 (PCIe x1, USB2.0, I2C)			
	M.2 B-Key	1 x B-Key 3042 (USB2.0) w/ Nano-SIM			
	M.2 M-Key	1 x M-Key 2280 (PCIe x4 Gen.4 for PCIe SSD), optional SATA			
	MIO Extension	4 PCIe x1 (Gen 3), 1 x USB2.0, LPC, SMBus, Line-out, Optional DP, Power-on, Reset			
Power	Supply Voltage	Vin: DC 12V-24V ± 5%; RTC Battery: Lithium 3V/210mAH			
	Connector	ATX 2x2 pin 90D, optional DC-Jack or ATX 2x2 pin 180D			
	Power Management	AT, ATX			
	Max. Consumption	43.3W (12V) / 46.8W (24V)	TBU	TBU	TBU
Idle Consumption	16.6W (12V) / 19.2W (24V)	TBU	TBU	TBU	
Environment	Temperature	Operating: Standard: 0 ~ 60 °C (32 ~ 140 °F), Extend: -40 ~ 85 °C (-40 ~ 185 °F) Storage: -40 ~ 85 °C (-40 ~ 185 °F)			
	Humidity	Operating: 40 °C @ 95% relative humidity, non-condensing Storage: 60 °C @ 95% relative humidity, non-condensing			
	Vibration Resistance	3.5 Grms			
Certification	EMC				
Mechanical	Dimensions				
		146 x 102 mm (5.7" x 4")			

Block Diagram



Ordering Information

Part Number	CPU	cTDP	Max. Frequency	Core	Gbe	USB	RS232/422/485	RS-232	MIOe	TPM2.0	Thermal solution	Operating Temp
MIO-5375C7P-Q4A1	i7-1185G7E	28W	4.4 GHZ	4	2	USB3.0*4 USB Type-C*1	2	2	1	Y	Active	0 - 60 °C
MIO-5375C7-Q4A1	i7-1185G7E	15W	4.4 GHZ	4	2	USB3.0*4 USB Type-C*1	2	2	1	Y	Passive	0 - 60 °C
MIO-5375C5-Q1A1	i5-1145G7E	15W	4.1 GHZ	4	2	USB3.0*4 USB Type-C*1	2	2	1	Y	Passive	0 - 60 °C
MIO-5375C3-P9A1	i3-1115G4E	15W	3.9 GHZ	2	2	USB3.0*4 USB Type-C*1	2	2	1	Y	Passive	0 - 60 °C
MIO-5375C7X-Q4A1	i7-1185GRE	15W	4.4 GHZ	4	2	USB3.0*4 USB Type-C*1	2	2	1	Y	Passive	-40 - 85 °C

Note: Standard product has two different cTDP setting (28/15W), and it has different BIOS setting. Please choose the correspond cTDP sku for your application.

Optional Accessories

Part No.	Description
1970004833N001	Heat spreader

Embedded OS/API

OS	Part No.	Description
WIN10	20706WX9HM0017	64-bit (UEFI mode only)
Software API	Download by website	
Ubuntu 20.04	20706U20DS0003	Desktop 20.04 LTS 64-bit

Rear I/O View



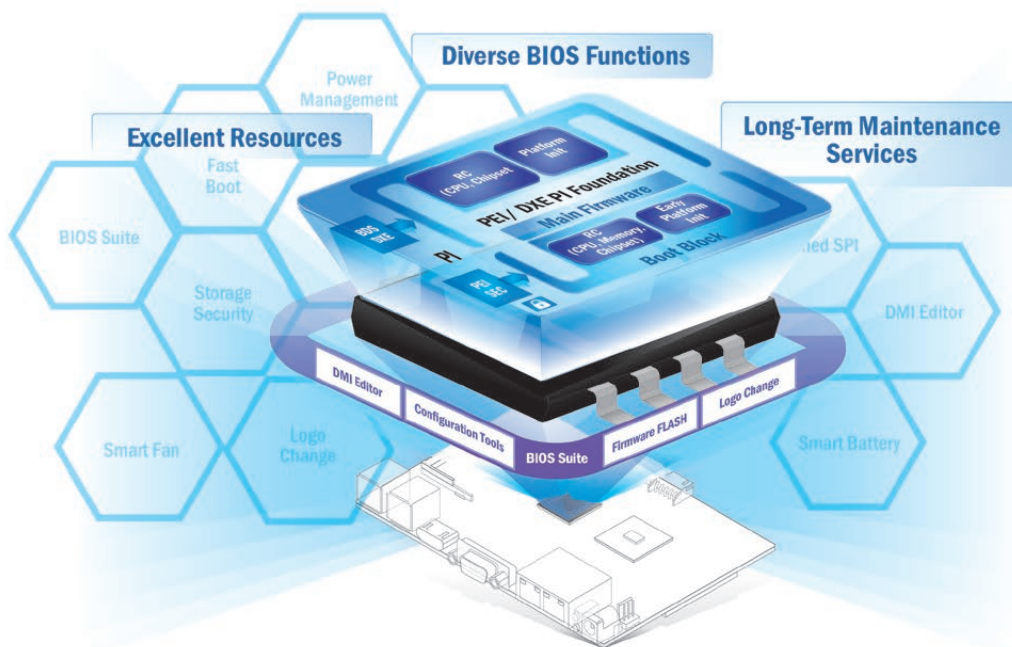
Packing List

Part No.	Description	Quantity
	MIO-5375 SBC	1
	Startup Manual	1
1700006291	SATA cable, 7P 30cm	1
1700031583-01	SATA Power cable, 15P/1*2P-2.0 35cm	1
1700030406-01	USB2.0 cable, 2*5P-2.0/USB-A 4P(F)*2 20cm	1
1700030404-01	COM1/2 Cable, D-SUB 9P(M)/1*10P-1.25 20cm	2
1700031582-01	COM3/4 Cable, D-SUB 9P(M)/1*5P-1.25 20cm	2
1700019584-01	Audio cable, 2*5P-2.0/Audio JACK*3 20cm	1
1970004794T001	MIO-5375 heatsink	1
1970004884T001	MIO-5375 QFCS Cooler	1
96665375000	Screws kit	1
	mini Jumper pack	1

Reliable Embedded BIOS Solutions

Custom BIOS services with long-term support

Advantech's high-quality embedded BIOS solutions deliver rapid execution and feature expert BIOS team support. These solutions feature multi-functional designs that ensure security and enable power/boot management. Advantech further provides 10+ years of BIOS version management, internal management, and longevity support for both hardware and BIOS — enhancing application efficiency, diversifying functionality, and optimizing performance.



Embedded BIOS Solution Advantages

Sufficient Sources

- Strong partnership with BIOS vendors
- 50+ engineers with extensive industrial BIOS experience

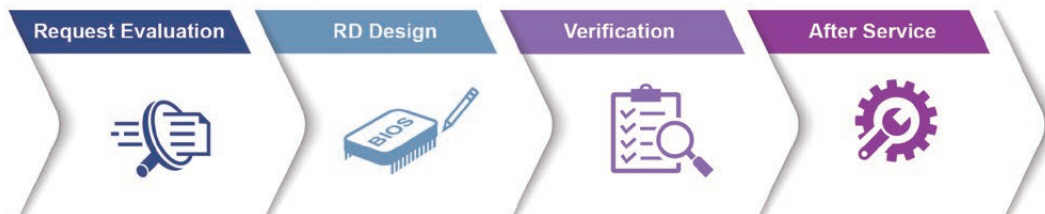
Diverse BIOS Functions

- Multi-layer security
- 3 second fast boot
- Power management
- BIOS suite utility

Long-Term Maintenance Services

- Platform longevity support
- 10-year BIOS version control
- BIOS remote backup

Value-Added Customization Process



Embedded Linux Support and Design-in Services

Hardware Certified Ubuntu and Yocto with Eco Partner Services

Linux is the most popular embedded OS for transportation, outdoor services, factory automation, and mission critical applications. Its open source and kernel reliability features ease security updates, and make it particularly adaptable to new AI and Edge computing technology. Advantech has cooperated with Canonical and other software partners to provide hardware certified Ubuntu image and Yocto BSP as Linux offerings. The Advantech, Embedded Linux, and Android Alliance (ELAA) delivers local software services and consultation.



Features

<p>Certified OS and BSP</p> <ul style="list-style-type: none"> Platform compatibility tests Preloaded functional driver and software stacks 	<p>Licensed Services</p> <ul style="list-style-type: none"> License authorized Canonical delivers 10-years of bug fixes and security updates In-house bundled service 	<p>Numerous AI and Edge Resources</p> <ul style="list-style-type: none"> Containerized technology for service provision and deployment AI resources from Caffe, TensorFlow, and mxnet 	<p>Local Partner Alliance</p> <ul style="list-style-type: none"> Embedded Linux and Android Alliance (ELAA)
--	--	--	---

Edge AI Suite

AI development for diverse application at the Edge

Increasing demand for AI inference/analytic capabilities at the Edge make AI training models, software development environments, and hardware configuration key factors in successful solution deployment. Advantech's Edge AI Suite helps users build AI demo devices quickly and choose optimal hardware solutions easily.



5x Performance Boost	All-in-one Installation	One Click AI Experience	Plug-and-play Environment	Discover Cost-effective Hardware
<ul style="list-style-type: none"> Integrated Intel® OpenVINO™ technology Boost AI using Advantech hardware 	<ul style="list-style-type: none"> Build AI environment in under 5 minutes Ready-to-use configuration 	<ul style="list-style-type: none"> User friendly configuration guidance One-click Benchmark acquisition 	<ul style="list-style-type: none"> Easy access to 100+ AI inference extensions Software development package available 	<ul style="list-style-type: none"> Diverse CPU/RAM options Find hardware solutions for AI development

WISE-DeviceOn

Massive IoT Device Management Utility

IoT deployment and management typically involves numerous disparate devices installed on multiple sites. These devices require effective monitoring, managing, and tracking. Advantech's easy-to-use WISE-DeviceOn interface enables users to remotely monitor device health, troubleshoot problems, and send software/firmware updates over-the-air (OTA). In sum, DeviceOn empowers quick real-time responsiveness to emerging problems.



Features

Comprehensive Management	Remote Access	Efficient Operations
<ul style="list-style-type: none"> • Devices status • Peripherals/firmware • Open for extension 	<ul style="list-style-type: none"> • Real-time monitoring • Remote controls • Troubleshooting 	<ul style="list-style-type: none"> • Zero-touch on-boarding • OTA updates • Batch control

Product Highlights



SOM-6883

High-performance 11th Gen Intel[®] COMe Type 6 Module



MIO-5375

Compact 11th Gen Intel[®] Outdoor Focused 3.5" SBC



EPC-B5587

10th Gen Intel[®] Xeon[®] based Edge server



EPC-R3220

Arm based IoT Edge Gateway

Tento produkt můžete zakoupit u společnosti AutoCont IPC a.s.



AutoCont IPC a.s.

Váš dodavatel průmyslových počítačů, komponent a speciálních průmyslových IT systémů.

 Uhlířská 1064/3, 710 00 Ostrava, Česká republika

 obchod@autocont-ipc.cz

 +420 552 301 002

 www.autocont-ipc.cz



PRŮMYSLOVÉ POČÍTAČE

fanless embedded PC, do racku, ...



POČÍTAČE S DISPLEJEM

panelové PC, terminály, do vozidel, ...



AUTOMATIZACE A SBĚR DAT

převodníky, karty, moduly, switche, ...



PERIFERIE A KOMPONENTY

monitory, klávesnice, desky, skříně, ...



NOTEBOOKY A TABLETY

odolné, windows, android, IP65, ...



INFORMAČNÍ KIOSKY

interiérové, venkovní, ...



MEDICÍNSKÁ TECHNIKA

počítače, tablety, LCD, klávesnice, ...



SOFTWAREVÁ ŘEŠENÍ

pro výrobu, zaměstnance, kiosky, ...



PŘEJÍT DO E-SHOPU

eshop.autocont-ipc.cz



DOPRAVA ZDARMA

Doprava zdarma v ČR a SR při objednávce nad 10 000 Kč bez DPH nebo nad 400 EUR.



PRODLOUŽENÁ ZÁRUKA

Záruka 2 roky na vyráběné počítače s možností jejího prodloužení až na 5 let.



ODMĚNA ZA VĚRNOST

Pravidelní zákazníci u nás nakupují za nižší ceny. Výše slevy se odvíjí od realizovaného obrátu.



SERVIS ON-SITE A IN-TIME

K projektovým dodávkám nabízíme rozšířenou podporu a servis s garancí výměny zařízení do 48 hodin.