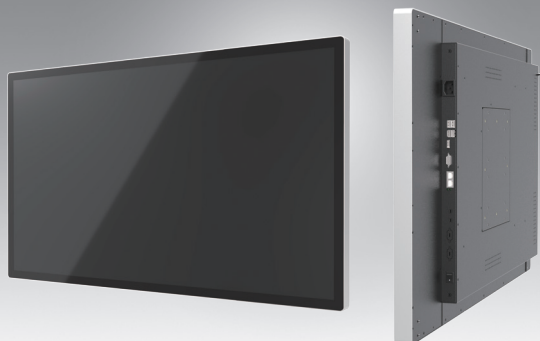


# UTC-542

## 42.5" Ubiquitous Touch Computer UTC-542D with Intel® Celeron® J1900\* UTC-542F with Intel® Core™ i5-6300U UTC-542G with Intel® Pentium® N4200

NEW



### Features

- Low Power, High Performance and fanless system design
- Built-in Intel® Celeron® J1900 (UTC-542D)
- Built-in Intel® Core™ i5-6300U (UTC-542F)
- Built-in Intel® Pentium® N4200 (UTC-542G)
- 42.5" monitor with 16:9 widescreen display
- IP65-rated front panel for water and dust resistance
- Supports both landscape and portrait screen orientations
- Side groove design for flexible peripheral installation
- Dual hot-swappable HDD/SSD slots with RAID 0/1 support
- Optional mirror coating to support smart mirror applications



### Introduction

UTC-542 features an extra slim border all-in-one computing system equipped with wide format, touch based and mirror coating LCD panel. It is easy to integrate key peripherals for diversified self-service and interactive signage deploy in different application areas. The systems deliver updated information with well-designed interactive interfaces, fully ensure relevant content and targeted promotions are delivered. UTC series touch panel computers are the best investments to enhance user satisfaction, further brand equity, and maximize business profits.

### Specifications

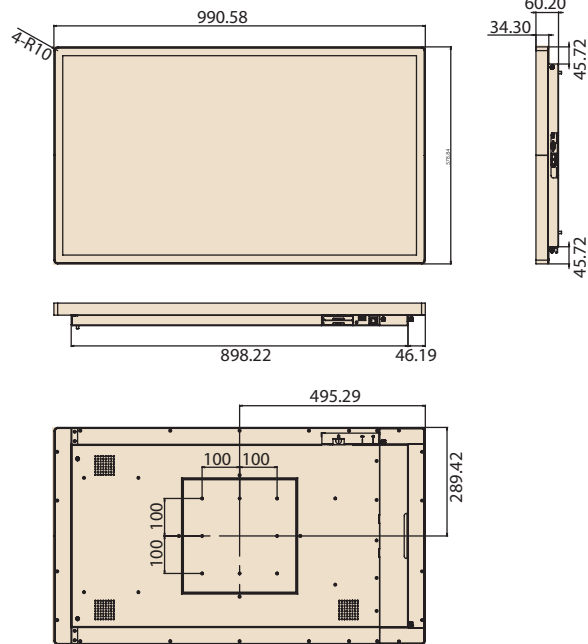
	CPU	Intel® Celeron® J1900 (UTC-542D)	Intel® Core™ i7-6600U (Available)* Intel® Core™ i5-6300U (UTC-542F) Intel® Core™ i3-6100U (Available)*	Intel® Pentium® N4200 (UTC-542G) Intel® Atom® E3950 (Available)*	
Processor System	Base Frequency	2 GHz (Quad-Core)	2.4 GHz (Dual-Core)	1.1 GHz (N4200/Quad-Core) 1.6 GHz (E3950/Quad-Core)	
	Cache	2 MB	3 MB	L2 Cache 2MB	
	Memory	1 x SO-DIMM DDR3L 1333 MHz up to 8 GB	2 x SO-DIMM DDR3L 1600MHz up to 16G	1 x SO-DIMM DDR3L 1867 MHz	
	HDD/SSD	Dual hot-swappable HDD/SSD slots with RAID 0,1 support			
	Network (LAN)	2 x Gigabit Ethernet ports			
	I/O Ports	2 x RS-232 COM (RS-422/485)*		2 x RS-232 COM (RS-422/485)*	
		4 x USB 2.0 / 1 x USB 3.0		3 x USB 2.0 / 2 x USB 3.0	
		2 x Gigabit Ethernet (RJ-45)		2 x Gigabit Ethernet (RJ-45)	
		1 x VGA		1 x VGA	
		1 x HDMI		1 x HDMI	
Stereo Speaker	10 W x 2				
Bus expansion	Full-size MiniPCIe/mSATA				
Dimensions (W x H x D)	990.6 x 578.8 x 60.2mm (Mirror Glass) 1016.9 x 605.2 x 60.5mm (Pcap / Mirror Pcap*)				
Weight	24.6 kg				
OS Support	WES 7P 32bit WES 7E 32bit Windows Pro Embedded 7 SP1 64bit WES 8 64bit Windows Embedded 8.1 Industry Pro 64bit Win 10 IoT Enterprise Linux Ubuntu 16.04 Android 4.4.2		WES 7P 32bit WES 7E 32bit Windows Pro Embedded 7 SP1 64bit WES 8 64bit Windows Embedded 8.1 Industry Pro 64bit Win 10 IoT Enterprise Linux Ubuntu 16.04		
			Win 10 IoT Enterprise Android 6.0 Linux Ubuntu 17.04		
Environmental Specifications	Operating Temperature	0 ~ 40° C (32 ~ 104° F)			
	Relative Humidity	10 ~ 95% @ 40° C non-condensing			
	Vibration	0.5G			
	Shock	5 G peak acceleration (11 msec. duration)			
Power	Front Panel Protection	IP65/ NEMA4 Compliant			
LCD Display	Input Rating	100-240V <sub>AC</sub> ~ 50/60Hz 3.7A			
	Size/Type	42.5" TFT LCD with LED backlight			
	Max.Resolution	1920 x 1080			
	Pixel Pitch (mm)	0.49 (H) x 0.49 (W)			
	Brightness (cd/m <sup>2</sup> )	450 nits			
Touch Screen Option (PE/GE)	View Angle	Horizontal: ±89° or 178° total / Vertical: ±89° or 178° total			
	Type	Projected Capacitive Touch Panel / Mirror Glass Panel (No touch function) / Mirror Projected Capacitive Touch Panel*			
Controller	Light Transmission	>90% (Pure Glass); >25% (Mirror Coating)			
	Controller	USB Interface			

\* Mirror PCap by project request.

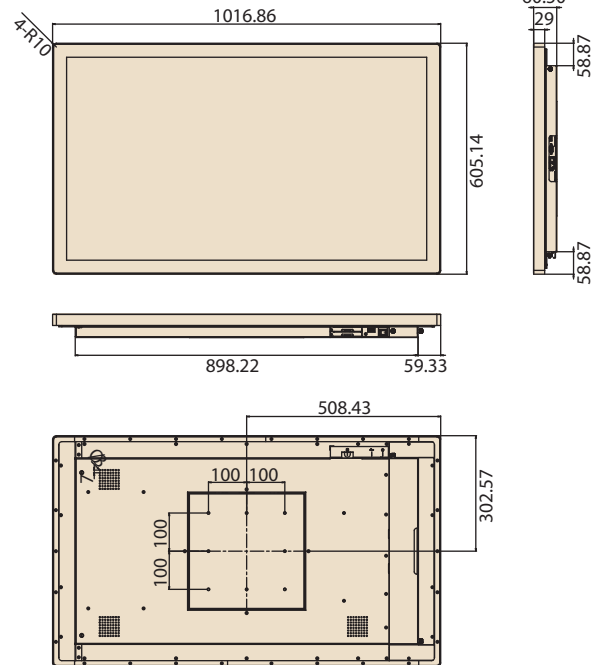
\*\* Only UTC-542D to support Android OS.

## Dimensions

### Mirror



### Pcap/ Mirror Pcap

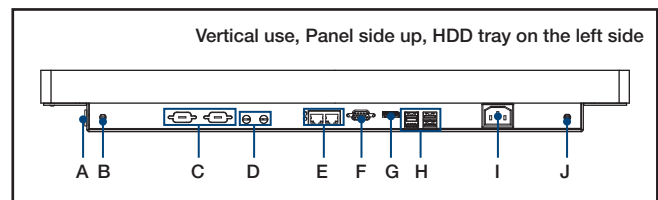


Unit: mm

## Ordering Information

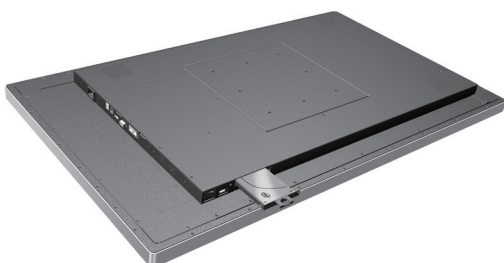
Part No.	Description
UTC-542GP-ATB0E	42.5", Intel® Pentium® N4200, Pcap Touch, 4GB RAM
UTC-542GM-ATB0E	42.5", Intel® Pentium® N4200, Mirror Glass, 4GB RAM
UTC-542DM-ATB0E	42.5", Intel® Celeron® J1900, Mirror Glass, 4GB RAM
UTC-542FM-ATB0E	42.5", Intel® Core™ i5-6300U, Mirror Glass, 4GB RAM
UTC-542DP-ATB0E	42.5", Intel® Celeron® J1900, Pcap Touch, 4GB RAM
UTC-542FP-ATB0E	42.5", Intel® Core™ i5-6300U, Pcap Touch, 4GB RAM
1702002605	Power Cord 2P FRANCE 10A/16A 220V 1.83M 90D
1702002600	Power Cord 3P UL/CSA(USA) 125V 10A 1.83M 180D
1700000596	Power Cord (China) CCC, 10A 250V, 3P 1830mm
1700018704	Power Cord UK BSI 2P 10A 250V 180cm 18AWG

## Fully- Integrated I/O



- A. Power Switch
- B. Antenna Port
- C. COM x 2
- D. Mic-in/ Line-out
- E. LAN x 2
- F. VGA
- G. HDMI
- H. USB 3.0 x 1, USB 2.0 x 3 (Baytrail)  
USB 3.0 x 2, USB 2.0 x 2 (Skylake)
- I. AC Power
- J. Antenna Port

### Easy Swappable HDD/SDD Slot



### Peripherals for UTC-542 series

Part No.	Description
UTC-542P-B01E	1D Barcode Scanner for UTC-542 (USB connection)
UTC-542P-B02E	2D Barcode Scanner for UTC-542 (USB connection)
UTC-542P-C01E	5M Camera Module For UTC-542 (USB connection)
UTC-542P-F01E	Finger Print Reader For UTC-542 (USB connection)
UTC-542P-M01E	Magnet Strip Reader For UTC-542 (USB connection)
UTC-542P-R01E	RFID Reader For UTC-542 (USB connection)
UTC-542P-S01E	Smart Card Reader For UTC-542 (USB connection)

### Installation Accessory

Part No.	Description
UTC-WALL-MOUNT2E	VESA Mount 200 x 200 mm

# Tento produkt můžete zakoupit u společnosti AutoCont IPC a.s.



## AutoCont IPC a.s.

Váš dodavatel průmyslových počítačů, komponent a speciálních průmyslových IT systémů.

 Uhlířská 1064/3, 710 00 Ostrava, Česká republika

 obchod@autocont-ipc.cz

 +420 552 301 002

 [www.autocont-ipc.cz](http://www.autocont-ipc.cz)



### PRŮMYSLOVÉ POČÍTAČE

*fanless embedded PC, do racku, ...*



### POČÍTAČE S DISPLEJEM

*panelové PC, terminály, do vozidel, ...*



### AUTOMATIZACE A SBĚR DAT

*převodníky, karty, moduly, switche, ...*



### PERIFERIE A KOMPONENTY

*monitory, klávesnice, desky, skříně, ...*



### NOTEBOOKY A TABLETY

*odolné, windows, android, IP65, ...*



### INFORMAČNÍ KIOSKY

*interiérové, venkovní, ...*



### MEDICÍNSKÁ TECHNIKA

*počítače, tablety, LCD, klávesnice, ...*



### SOFTWAREVÁ ŘEŠENÍ

*pro výrobu, zaměstnance, kiosky, ...*



### PŘEJÍT DO E-SHOPU

[eshop.autocont-ipc.cz](http://eshop.autocont-ipc.cz)



### DOPRAVA ZDARMA

Doprava zdarma v ČR a SR při objednávce nad 10 000 Kč bez DPH nebo nad 400 EUR.



### PRODLOUŽENÁ ZÁRUKA

Záruka 2 roky na vyráběné počítače s možností jejího prodloužení až na 5 let.



### ODMĚNA ZA VĚRNOST

Pravidelní zákazníci u nás nakupují za nižší ceny. Výše slevy se odvíjí od realizovaného obrátu.



### SERVIS ON-SITE A IN-TIME

K projektovým dodávkám nabízíme rozšířenou podporu a servis s garancí výměny zařízení do 48 hodin.