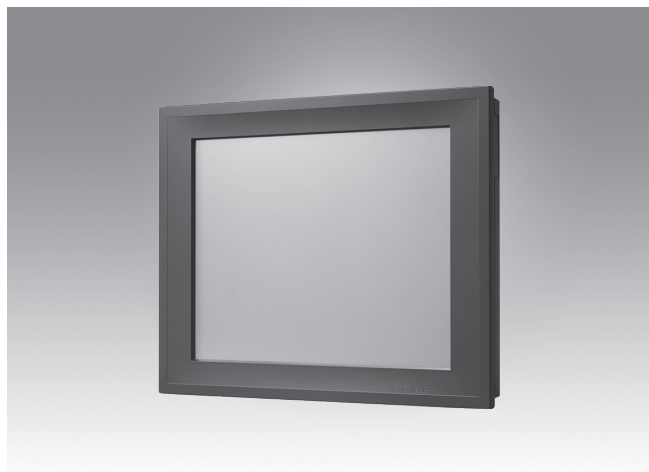


PPC-3170

17" Fanless Panel PC with Intel® Atom™ Quad-Core Processor



Features

- 17" SXGA TFT LCD with resistive touchscreen
- Intel® Atom™ E3845 quad-core, 1.91 GHz, processor
- Fanless, slim design
- Supports 1 x internal 2.5" SATA HDD and 1 x mSATA
- 1 x PCI/PCIe x1 expansion slot
- Wide operating temperature range (-20 ~ 60 °C/-4 ~ 140 °F)
- Wide range DC support (9 ~ 32 V_{DC})
- 1 x isolated RS-422/485 with automatic flow control and dual Intel GbE
- Optional GPIO (8 channels, TTL level)



Introduction

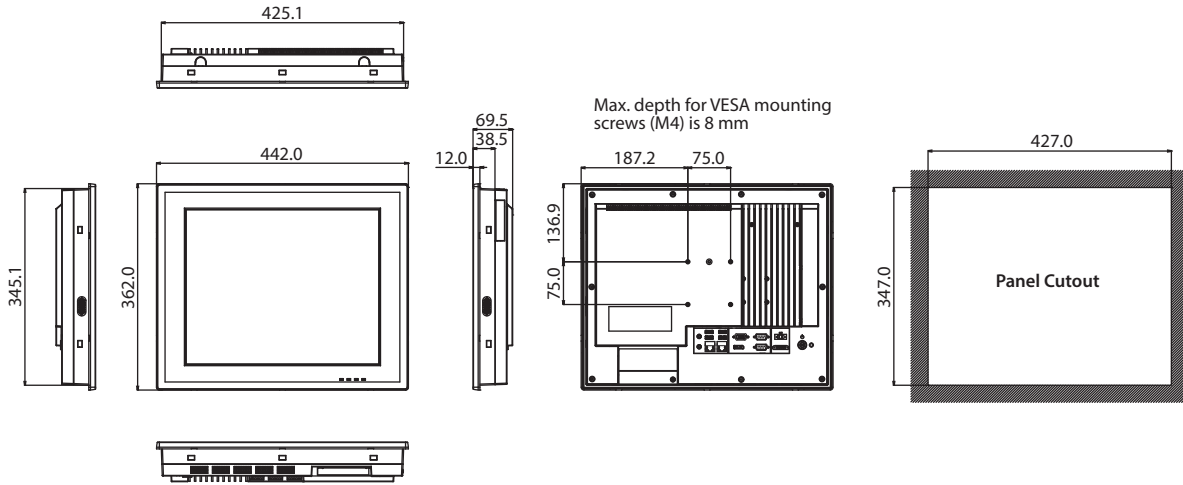
The PPC-3170 is a 17" fanless panel PC equipped with a high-performance Intel® Atom™ E3845 quad-core, 1.91 GHz, processor that supports both a wide operating temperature range (-20 ~ 60 °C) and wide power input range (9 ~ 32 V_{DC}). The provision of multiple I/O, including 4 x COM, 1 x USB 3.0, 1 x isolated RS-422/485, and dual Intel® Gigabit Ethernet, ensures easy integration and connectivity. With the inclusion of 1 x PCI/PCIe expansion slot, the PPC-3170 can be integrated with fieldbus protocols or proprietary cards for increased application potential.

Specifications

| | | |
|---------------------------------|--------------------------------|---|
| System | CPU | Intel® Atom™ E3845 quad core |
| | Frequency | 1.91 GHz |
| | L3 Cache | 2 MB |
| | Memory | 1 x SODIMM DDR3L 1333 MHz (max. 8 GB) |
| | Storage | 1 x 2.5" SATA bay 1 x mSATA bay |
| | Network (LAN) | 2 x 10/100/1000 Mbps Ethernet (Intel I210) |
| | I/O | 1 x isolated RS-422/485 (terminal block) 4 x RS-232, two external and two by internal pin header (need optional module) 1 x GPIO (8 channels, TTL level) by internal pin header (need optional module) 1 x USB 3.0, 3 x USB 2.0 1 x VGA 1 x DP1.1a 1 x Line-out, 1 x Mic-in |
| | Expansion | 1 x Mini PCIe 1 x PCI (default); 1 x PCIe x1 (in the accessory box) Optional: 1 x Cfast; 1 x CF card; 1 x Internal USB dongle; 2 x RS-232 or 1 x RS-232 + 1 x GPIO |
| Physical Characteristics | Watchdog Timer | 255 timer levels, set up by software |
| | Speaker | 2 x 1W |
| | Dimensions | 442.0 x 362.0 x 69.5 mm (17.4 x 14.3 x 2.74 in) |
| OS Support | Weight | 6.3 kg (13.89 lb) |
| | OS Support | Microsoft® Windows 7/8.1/10 (32/64-bit), WES7, WEC7, Linux |
| Power Consumption | Input Voltage | 9 ~ 32 V _{DC} |
| | Power Consumption | 34W (Burn-in test 7.0 in Windows 7 32 bit) |
| LCD | Display Type | 17" TFT LED panel |
| | Max. Resolution | 1280 x 1024 |
| | Viewing Angle | 80 (left), 80 (right), 60 (up), 80 (down) |
| | Luminance (cd/m ²) | 350 |
| | Contrast Ratio | 800 |
| | Backlight Lifetime | 50,000 hr (min.) |
| Touchscreen | Touch Type | 5-wire analog resistive |
| | Light Transmission | 81+/-3% |
| | Controller | USB interface |
| | Durability (Touches) | 36 million |

Dimensions

Unit: mm



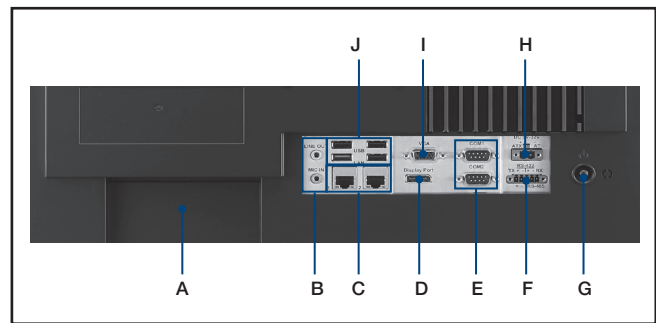
Panel Cutout Dimensions: 427 x 347 mm (16.81 x 13.66 in)

| | | |
|--------------------|------------------------|---|
| Environment | Operating Temperature | 0 ~ 50 °C (32 ~ 122 °F) with 2.5" SATA SSD -20 ~ 60 °C (-4 ~ 140 °F) with -40 ~ 85 °C mSATA or 2.5" SATA SSD |
| | Storage Temperature | -40 ~ 60 °C (-40 ~ 140 °F) |
| | Relative Humidity | 10 ~ 95% @ 40 °C (non-condensing) |
| | Shock | Operating 10 G peak acceleration (11 ms duration), follow IEC 60068-2-27 |
| | Vibration | Operating Random Vibration Test 5 ~ 500Hz, 1Grms @with HDD, follow IEC 60068-2-64 |
| | EMC | BSMI, CE, FCC Class A |
| | Safety | CB, CCC, BSMI, UL |
| | Front Panel Protection | IP65 compliant |

Ordering Information

| Part Number | Description |
|-------------------|---|
| PPC-3170-RE4AE | Intel Atom E3845 (1.91G) Panel PC with 17" SXGA panel, 5-wire resistive T/S, w/o memory |
| PPC-WLAN-B1E | WiFi Module with Antenna Cable 40cm for PPC |
| PPC-174T-WL-MTE | Wall mount kit for PPC series |
| PPC-ARM-A03 | PPC ARM VESA Standard |
| PPC-3150-COME | Module to install either two additional RS-232 port or one additional RS-232 and one GPIO for PPC-3150/PPC-3170 |
| 96PSA-A90W190T-1 | ADP A/D 100-240V 90W 19V W/PFC |
| 1700001524 | Power cord 3P UL 10A 125V 1.8M |
| 170203183C | Power cord 3P Europe (WS-010+083) 183cm |
| 1700008921 | Power cord 3P/3P 1.8M PSE |
| 96CB-POWER-B-1.8M | Power code 3P CCC(China) 1.8M |
| 2070015120 | Image WES 7P 32bit MUI v4.17 for PPC-3150/70/90 |
| 98R3175R00E | 19" Rack Mounting kits for PPC |
| PPC-STAND-A1E | Stand For PPC Series |
| 98R3C31500E | PPC-315/317/319 internal USB dongle kits |
| 98R3C31510E | PPC-3150/3170 install CF card kits |
| 98R3C31520E | PPC-3150/PPC-3170 CFast card kits |

I/O View



- A. 1 x Expansion slot x 1 (PCI or PCIe x1)
- B. Mic-in/Line-out
- C. 2 x Intel Gigabit Ethernet
- D. 1 x DisplayPort
- E. 2 x RS-232
- F. 1 x Isolated RS-422/485
- G. Power Button
- H. DC inlet and AT/ATX switch
- I. 1 x VGA
- J. 1 x USB 3.0, 3 x USB 2.0

Tento produkt můžete zakoupit u společnosti AutoCont IPC a.s.



AutoCont IPC a.s.

Váš dodavatel průmyslových počítačů, komponent a speciálních průmyslových IT systémů.

 Uhlířská 1064/3, 710 00 Ostrava, Česká republika

 obchod@autocont-ipc.cz

 +420 552 301 002

 www.autocont-ipc.cz



PRŮMYSLOVÉ POČÍTAČE

fanless embedded PC, do racku, ...



POČÍTAČE S DISPLEJEM

panelové PC, terminály, do vozidel, ...



AUTOMATIZACE A SBĚR DAT

převodníky, karty, moduly, switche, ...



PERIFERIE A KOMPONENTY

monitory, klávesnice, desky, skříně, ...



NOTEBOOKY A TABLETY

odolné, windows, android, IP65, ...



INFORMAČNÍ KIOSKY

interiérové, venkovní, ...



MEDICÍNSKÁ TECHNIKA

počítače, tablety, LCD, klávesnice, ...



SOFTWAREVÁ ŘEŠENÍ

pro výrobu, zaměstnance, kiosky, ...



PŘEJÍT DO E-SHOPU

eshop.autocont-ipc.cz



DOPRAVA ZDARMA

Doprava zdarma v ČR a SR při objednávce nad 10 000 Kč bez DPH nebo nad 400 EUR.



PRODLOUŽENÁ ZÁRUKA

Záruka 2 roky na vyráběné počítače s možností jejího prodloužení až na 5 let.



ODMĚNA ZA VĚRNOST

Pravidelní zákazníci u nás nakupují za nižší ceny. Výše slevy se odvíjí od realizovaného obrátu.



SERVIS ON-SITE A IN-TIME

K projektovým dodávkám nabízíme rozšířenou podporu a servis s garancí výměny zařízení do 48 hodin.