

MGate™ 5102-PBM-PN Series

1-port PROFIBUS-to-PROFINET gateways



- > Protocol conversion between PROFIBUS and PROFINET
- > Automatic scan of PROFIBUS devices, and easy configuration
- > microSD card for configuration backup
- > Built-in Ethernet cascading for easy wiring
- > Redundant dual DC power inputs and relay output supported
- > Embedded I/O monitoring and diagnostic tools
- > Web-based GUI for I/O data visualization
- > -40 to 75°C wide operating temperature models available



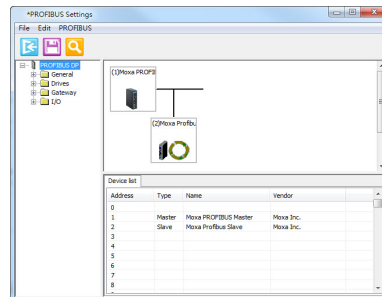
Overview

The MGate 5102-PBM-PN gateway provides a communication portal between PROFIBUS devices (e.g., PROFIBUS PLC or drive) and the PROFINET host. All models are protected with a rugged metallic casing, are DIN rail mountable, and offer optional built-in optical

isolation. The PROFIBUS and Ethernet status LED indicators are provided for easy maintenance. The rugged design is suitable for industrial applications such as oil & gas, power, process automation, and factory automation.

Easy Setup Tools

Both the Windows MGate Manager utility and web console support the AutoScan function, which makes configuration and operation easy. AutoScan automatically detects all connected PROFIBUS slave devices and their available I/O modules, allowing you to configure your gateways very quickly, and a data mapping table is provided. Furthermore, one click is all that's needed to export all PROFIBUS I/O modules to a GSDML file to assist in the configuration of the PROFINET controller (e.g., a Siemens PLC).



Various Maintenance Functions

The MGate 5102-PBM-PN provides a web console and Telnet console for remote maintenance, with both consoles supporting encryption commutation functions such as HTTPS and SSH to prevent unauthorized access. The status and changes in I/O data of all PROFIBUS slaves can be monitored remotely via the web console,

and users can also review the log from the web console to see which system events have occurred. A relay output alarm is provided for the power input and Ethernet cable status. These functions make it easy for maintenance engineers to troubleshoot and maintain devices.

Redundant Power Inputs

The MGate 5102-PBM-PN has dual power inputs for greater reliability. The power inputs allow simultaneous connections to two live DC power sources to provide uninterrupted operation even if one power

source fails. The higher level of reliability makes these advanced PROFIBUS master to PROFINET gateways ideal for demanding industrial applications.

Specifications

Ethernet Interface

Protocol: PROFINET RT
Number of Ports: 2 (1 IP)
Speed: 10/100 Mbps, Auto MDI/MDIX
Connector: 8-pin RJ45
Magnetic Isolation Protection: 1.5 kV built-in

PROFIBUS Interface

Protocol: PROFIBUS DP-V1 Master
Number of Ports: 1
Data Rate: 9600 bps to 12 Mbps
Connector: DB9 female
Isolation: 2 kV (built-in)
Serial Signals (Serial Console)
Connector: 8-pin RJ45
RS-232: TxD, RxD, RTS, CTS, DTR, DSR, DCD, GND

Software

Configuration Options: Windows utility, serial console, web console (HTTP/HTTPS), Telnet/SSH console
Utilities: MGate Manager for Windows 2000, Windows XP/2003/ Vista/2008/7 x86/x64

Physical Characteristics

Housing: Metal
Weight: 500 g
Dimensions: 36 x 105 x 140 mm (1.42 x 4.13 x 5.51 in)

Environmental Limits

Operating Temperature:
 Standard Models: 0 to 60°C (32 to 140°F)
 Wide Temp. Models: -40 to 75°C (-40 to 167°F)
Storage Temperature: -40 to 85°C (-40 to 185°F)
Ambient Relative Humidity: 5 to 95% (non-condensing)

Power Requirements

Input Voltage: 12 to 48 VDC
Power Connector: Terminal block
Power Consumption: 430 mA @ 12 VDC

Standards and Certifications

Safety: UL 508, EN 60950-1
Hazardous Location: UL/cUL Class 1 Division 2 Groups A/B/C/D, ATEX Zone 2 (pending)
EMC: CE, FCC
EMI: EN 55022 Class A, FCC Part 15 Subpart B Class A
EMS:

EN 55024,
 EN 61000-4-2 (ESD) Level 3,
 EN 61000-4-3 (RS) Level 3,
 EN 61000-4-4 (EFT) Level 4,
 EN 61000-4-5 (Surge) Level 3,
 EN 61000-4-6 (CS) Level 3,
 EN 61000-4-8,
 EN 61000-4-11,
 EN 61000-4-12

Shock: IEC 60068-2-27
Freefall: IEC 60068-2-32
Vibration: IEC 60068-2-6

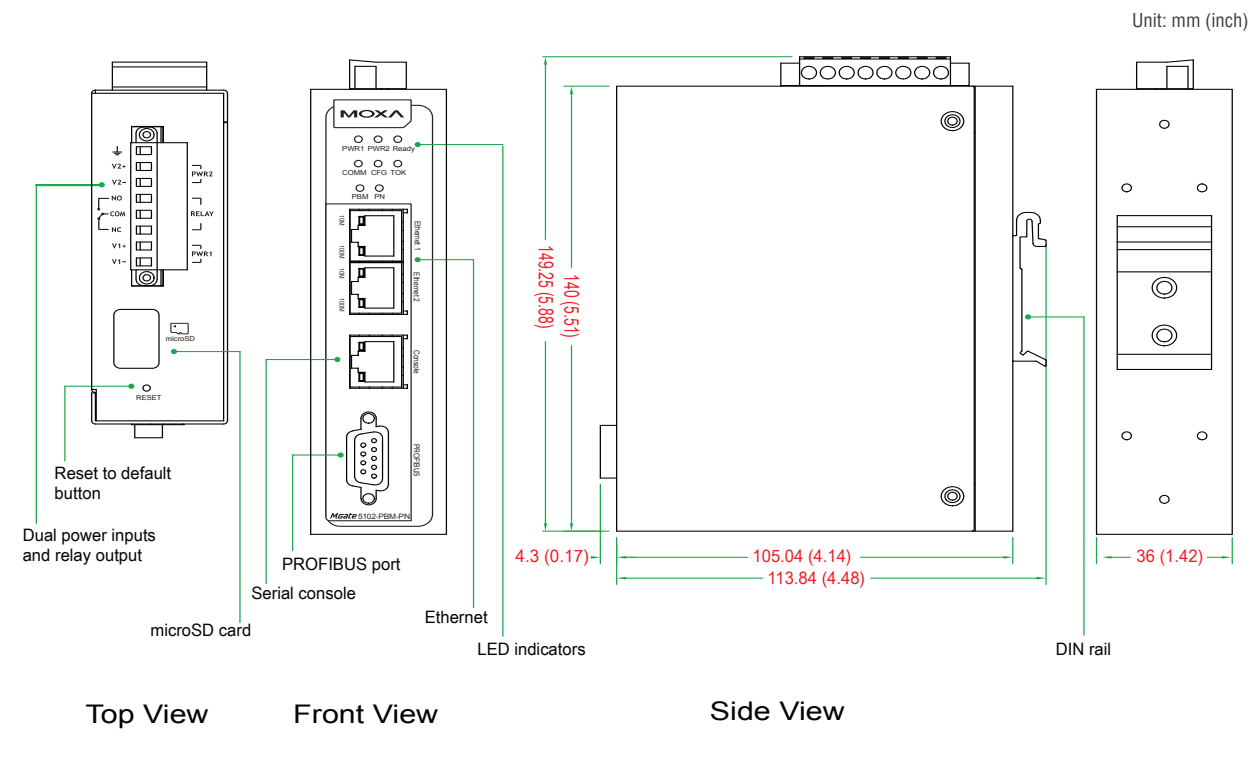
Reliability

MTBF (mean time between failures): 980,417 hrs

Warranty

Warranty Period: 5 years
Details: See www.moxa.com/warranty

Dimensions



: Ordering Information

Available Models

MGate 5102-PBM-PN: 1-port PROFIBUS-to-PROFINET gateway, 12-48 VDC, 0 to 60°C operating temperature

MGate 5102-PBM-PN-T: 1-port PROFIBUS-to-PROFINET gateway, 12-48 VDC, -40 to 75°C operating temperature

Optional Accessories (can be purchased separately)

DR-75-24: 75W/3.2A DIN rail 24 VDC power supply with universal 85 to 264 VAC input

DR-120-24: 120W/5A DIN rail 24 VDC power supply with 88 to 132 VAC/176 to 264 VAC input by switch

WK-36-02: Wall mounting kit

Package Checklist

- 1 MGate 5102-PBM-PN PROFIBUS-to-PROFINET gateway
- Documentation and software CD
- Quick installation guide (printed)
- Warranty card

Tento produkt můžete zakoupit u společnosti AutoCont IPC a.s.



AutoCont IPC a.s.

Váš dodavatel průmyslových počítačů, komponent a speciálních průmyslových IT systémů.

 Uhlířská 1064/3, 710 00 Ostrava, Česká republika

 obchod@autocont-ipc.cz

 +420 552 301 002

 www.autocont-ipc.cz



PRŮMYSLOVÉ POČÍTAČE

fanless embedded PC, do racku, ...



POČÍTAČE S DISPLEJEM

panelové PC, terminály, do vozidel, ...



AUTOMATIZACE A SBĚR DAT

převodníky, karty, moduly, switche, ...



PERIFERIE A KOMPONENTY

monitory, klávesnice, desky, skříně, ...



NOTEBOOKY A TABLETY

odolné, windows, android, IP65, ...



INFORMAČNÍ KIOSKY

interiérové, venkovní, ...



MEDICÍNSKÁ TECHNIKA

počítače, tablety, LCD, klávesnice, ...



SOFTWAREVÁ ŘEŠENÍ

pro výrobu, zaměstnance, kiosky, ...



PŘEJÍT DO E-SHOPU

eshop.autocont-ipc.cz



DOPRAVA ZDARMA

Doprava zdarma v ČR a SR při objednávce nad 10 000 Kč bez DPH nebo nad 400 EUR.



PRODLOUŽENÁ ZÁRUKA

Záruka 2 roky na vyráběné počítače s možností jejího prodloužení až na 5 let.



ODMĚNA ZA VĚRNOST

Pravidelní zákazníci u nás nakupují za nižší ceny. Výše slevy se odvíjí od realizovaného obrátu.



SERVIS ON-SITE A IN-TIME

K projektovým dodávkám nabízíme rozšířenou podporu a servis s garancí výměny zařízení do 48 hodin.