

MGate™ 5101-PBM-MN Series

1-port PROFIBUS-to-Modbus TCP gateways



- > Protocol conversion between PROFIBUS and Modbus TCP
- > Automatic scan of PROFIBUS devices for easy configuration
- > Redundant dual DC power inputs and relay output supported
- > Embedded data packet analyzer and diagnostic tool
- > Web-based GUI for I/O data visualization
- > -40 to 75°C wide operating temperature models available



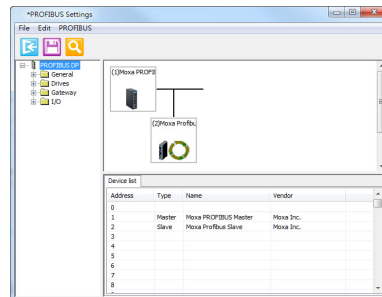
Overview

The MGate 5101-PBM-MN gateway provides a communication portal between PROFIBUS devices (e.g. PROFIBUS drives or instruments) and Modbus TCP hosts. All models are protected with a rugged metallic casing, DIN-Rail mountable, and offer optional built-in

optical isolation. The PROFIBUS and Ethernet status LED indicators are provided for easy maintenance. The rugged design is suitable for industrial applications such as oil/gas, power, process automation, and factory automation.

Windows Utility for Easy Configuration and Traffic Monitoring

The MGate Manager utility provides a user friendly interface to make configuration and operation as easy as possible. Moxa's innovative AutoScan function can automatically detect all connected PROFIBUS slave devices and their available I/O modules to quickly complete gateway configuration, after which an easy to read data mapping table is created to assist in the configuration of Modbus TCP master (e.g. SCADA, PLC) settings. In addition, users can configure import/export maintenance functions, and use embedded monitoring tools to maintain Modbus communication packets logs, which can be used for troubleshooting.



Various Maintenance Functions

The MGate 5101-PBM-MN provides Web console and Telnet console for remote maintenance. Each also supports encryption commutation functions such as HTTPS and SSH for preventing unauthorized access. The log functions are provided in firmware such as connection event of Modbus or PROFIBUS for maintenance. Users can monitor each

I/O data and review the log through the web console remotely. A relay output alarm is provided for the power input status. It gives maintenance engineers an additional tool for troubleshooting and maintenance.

Redundant Power Inputs

The MGate 5101-PBM-MN has dual power inputs for greater reliability. The power inputs allow simultaneous connections to two live DC power sources to provide uninterrupted operation even if one power

source fails. The higher level of reliability makes these advanced PROFIBUS master to Modbus TCP gateways ideal for demanding industrial applications.

Specifications

Ethernet Interface

Number of Ports: 1
Speed: 10/100 Mbps, Auto MDI/MDIX
Connector: 8-pin RJ45
Magnetic Isolation Protection: 1.5 KV built-in

PROFIBUS Interface

Protocol: PROFIBUS DP-V1 Master
Number of Ports: 1
Data Rate: 9600 bps to 12 Mbps
Connector: DB9 female
Isolation: 2KV (Built-in)

Modbus TCP

Operation Modes: Modbus TCP Slave/Master

Serial Signals (Serial Console)

RS-232: Tx/D, Rx/D, RTS, CTS, DTR, DSR, DCD, GND

Software

Configuration Options: Serial Console, Windows Utility, Web (HTTP/HTTPS), Telnet/SSH

Utilities: MGate Manager for Windows 2000, Windows XP/2003/ Vista/2008/7 x86/x64

Physical Characteristics

Housing: Metal
Weight: 500 g
Dimensions: 36 x 105 x 140 mm (1.42 x 4.13 x 5.51 in)

Environmental Limits

Operating Temperature:
 Standard Models: 0 to 60°C (32 to 140°F)
 Wide Temp. Models: -40 to 75°C (-40 to 167°F)
Storage Temperature: -40 to 85°C (-40 to 185°F)
Ambient Relative Humidity: 5 to 95% (non-condensing)

Power Requirements

Input Voltage: 12 to 48 VDC
Power Connector: Terminal block
Power Consumption: 365 mA @ 12 VDC

Standards and Certifications

Safety: UL 60950-1, EN 60950-1
EMC: CE, FCC
EMI: EN 55022 Class A, FCC Part 15 Subpart B Class A

EMS:

EN 55024,
 EN 61000-4-2 (ESD) Level 3,
 EN 61000-4-3 (RS) Level 3,
 EN 61000-4-4 (EFT) Level 4,
 EN 61000-4-5 (Surge) Level 3,
 EN 61000-4-6 (CS) Level 3,
 EN 61000-4-8,
 EN 61000-4-11,
 EN 61000-4-12

Shock: IEC 60068-2-27

Freefall: IEC 60068-2-32

Vibration: IEC 60068-2-6

Reliability

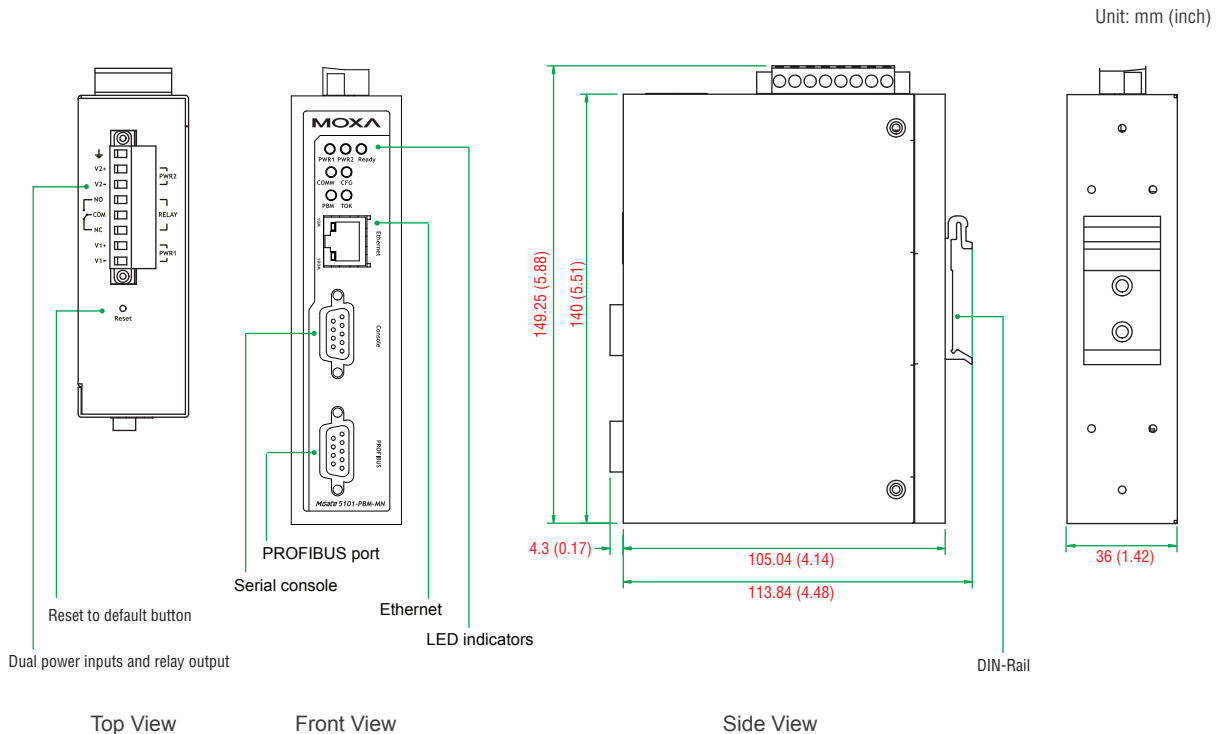
MTBF (mean time between failures): 540,026 hrs

Warranty

Warranty Period: 5 years

Details: See www.moxa.com/warranty

Dimensions



: Ordering Information

Available Models

MGate 5101-PBM-MN: 1-port PROFIBUS master-to-Modbus TCP gateway, 12-48 VDC, 0 to 60°C operating temperature

MGate 5101-PBM-MN-T: 1-port PROFIBUS master-to-Modbus TCP gateway, 12-48 VDC, -40 to 75°C operating temperature

Optional Accessories (can be purchased separately)

DR-45-24: 45W/2A DIN-Rail 24 VDC power supply with universal 85 to 264 VAC input

DR-75-24: 75W/3.2A DIN-Rail 24 VDC power supply with universal 85 to 264 VAC input

DR-120-24: 120W/5A DIN-Rail 24 VDC power supply with 88 to 132 VAC/176 to 264 VAC input by switch

WK-36-02: Wall mounting kit

Package Checklist

- 1 MGate 5101-PBM-MN PROFIBUS master to Modbus TCP gateway
- Documentation and software CD
- Quick installation guide (printed)
- Warranty card

Tento produkt můžete zakoupit u společnosti AutoCont IPC a.s.



AutoCont IPC a.s.

Váš dodavatel průmyslových počítačů, komponent a speciálních průmyslových IT systémů.

 Uhlířská 1064/3, 710 00 Ostrava, Česká republika

 obchod@autocont-ipc.cz

 +420 552 301 002

 www.autocont-ipc.cz



PRŮMYSLOVÉ POČÍTAČE

fanless embedded PC, do racku, ...



POČÍTAČE S DISPLEJEM

panelové PC, terminály, do vozidel, ...



AUTOMATIZACE A SBĚR DAT

převodníky, karty, moduly, switche, ...



PERIFERIE A KOMPONENTY

monitory, klávesnice, desky, skříně, ...



NOTEBOOKY A TABLETY

odolné, windows, android, IP65, ...



INFORMAČNÍ KIOSKY

interiérové, venkovní, ...



MEDICÍNSKÁ TECHNIKA

počítače, tablety, LCD, klávesnice, ...



SOFTWAREVÁ ŘEŠENÍ

pro výrobu, zaměstnance, kiosky, ...



PŘEJÍT DO E-SHOPU

eshop.autocont-ipc.cz



DOPRAVA ZDARMA

Doprava zdarma v ČR a SR při objednávce nad 10 000 Kč bez DPH nebo nad 400 EUR.



PRODLOUŽENÁ ZÁRUKA

Záruka 2 roky na vyráběné počítače s možností jejího prodloužení až na 5 let.



ODMĚNA ZA VĚRNOST

Pravidelní zákazníci u nás nakupují za nižší ceny. Výše slevy se odvíjí od realizovaného obrátu.



SERVIS ON-SITE A IN-TIME

K projektovým dodávkám nabízíme rozšířenou podporu a servis s garancí výměny zařízení do 48 hodin.